

City of Bainbridge Island Sound to Olympics Trail

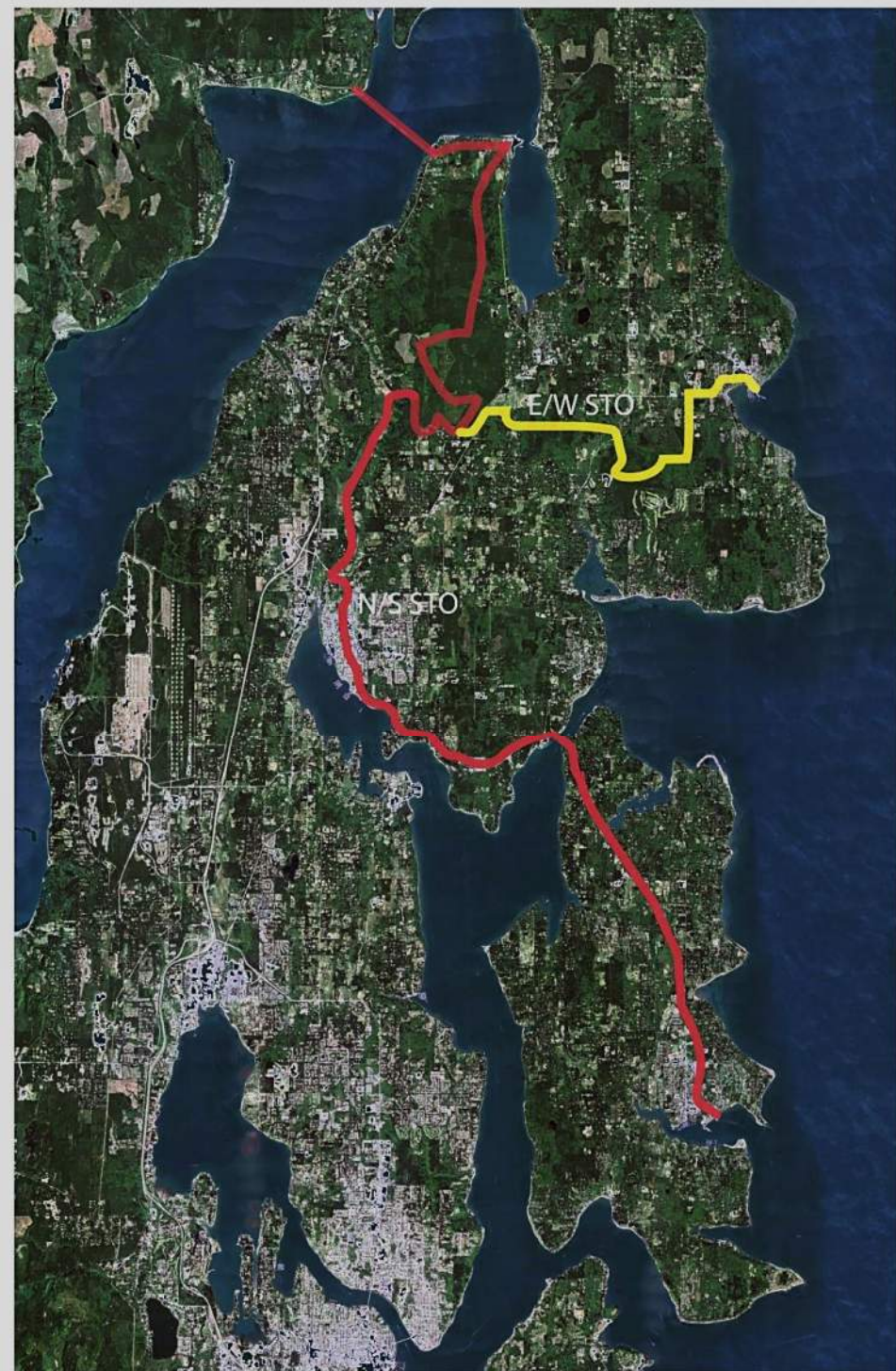


Agenda

- **Why Are We Doing This?**
- **How Did We Get Here?**
- **Frequently Asked Questions**

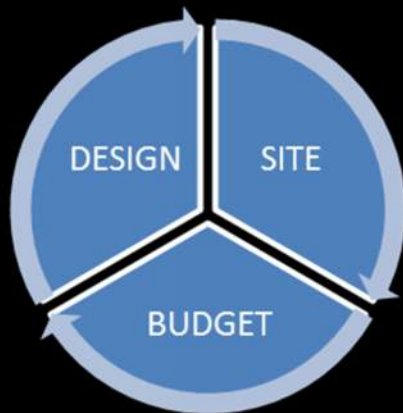
Context

- Connects Olympic Discovery Trail with Mountains to Sound Greenway
- Included in Kitsap County Trail Plan and COBI Non-motorized Transportation Plans
- Complements and draws from Waterfront Seattle project



Evaluation Criteria

- Safety
- Connectivity / Linkage
- Continuity / Directness
- Trail Experience
- Environmental Impact
- Aesthetics
- Concurrence with other Plans
- Constructability
- Maintenance / Operations
- Funding Opportunities
- Cost





Approved Trail Alignment

Frequently Asked Questions

When was the public input opportunity?

2014

- May Design consultant selected
- Sept NMTAC meeting presentation
- Sept Public Meeting #1
- Oct Community Site Walk
- Oct Public Meeting #2
- Nov NMTAC meeting presentation
- Nov Public Meeting #3
- Nov Preferred Option approved



2015

Design Drawings

2016

Bidding (First bids rejected)

2017

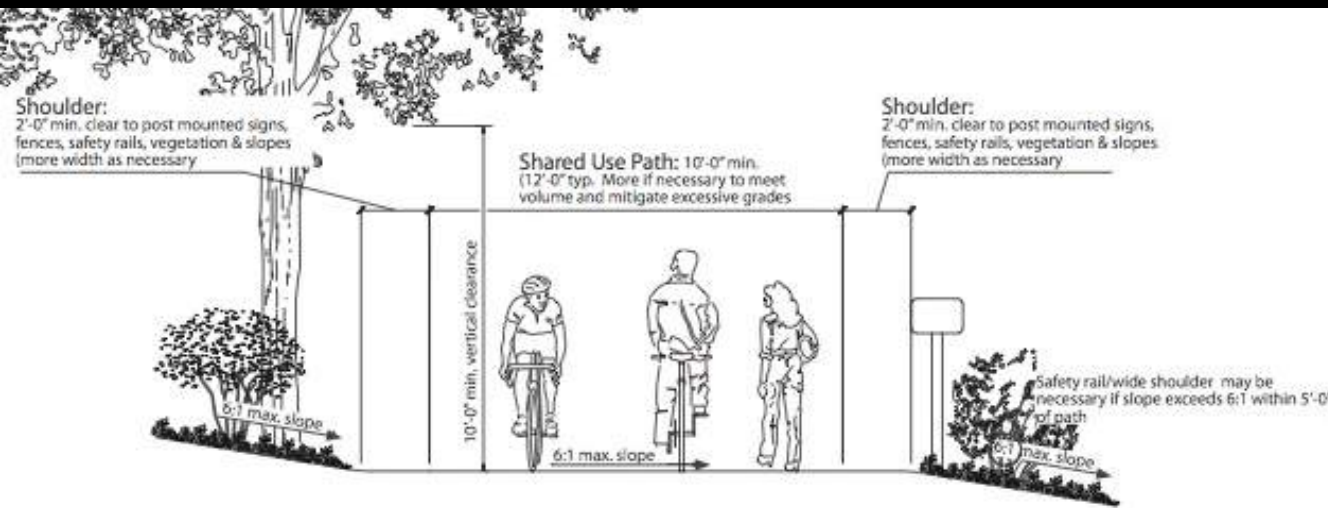
Construction



Frequently Asked Questions

Why does the trail have to be so wide?

- WSDOT Shared Use Path Standard
- ADA conformance
- Condition for Funding



Frequently Asked Questions

Why did you have to cut all those trees?

- Design for least impact
- Width of ROW
- Width of trail
- Steepness of slope



Frequently Asked Questions

What will be replanted?

- Native plants
- 282 trees
- Over 8,000 native shrubs and groundcovers
- Ornamental plantings at Winslow plaza



Centennial Trail, Snohomish Cty

Frequently Asked Questions

Why couldn't the trail go along the road?

- Side path
- Not ADA compliant
- Taller walls and more trees cut
- Less separation from road
- Less desirable user experience



Side Path, Poulsbo

Frequently Asked Questions

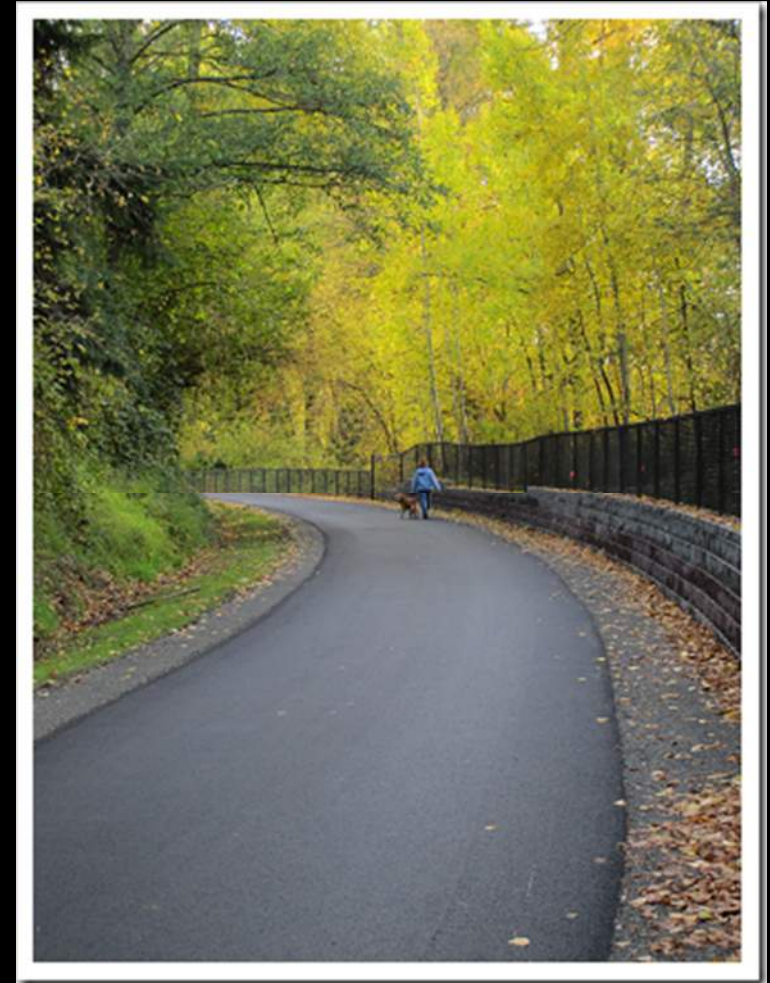
Why does it cost so much?

- Walls and boardwalk
- Plaza at Winslow Way
- Pedestrian ADA ramp
- City pays 13.5%

Future segments will cost less



Burke Gilman Trail, Seattle



East Lake Sammamish Trail, Redmond

Frequently Asked Questions

Who's paying for it?

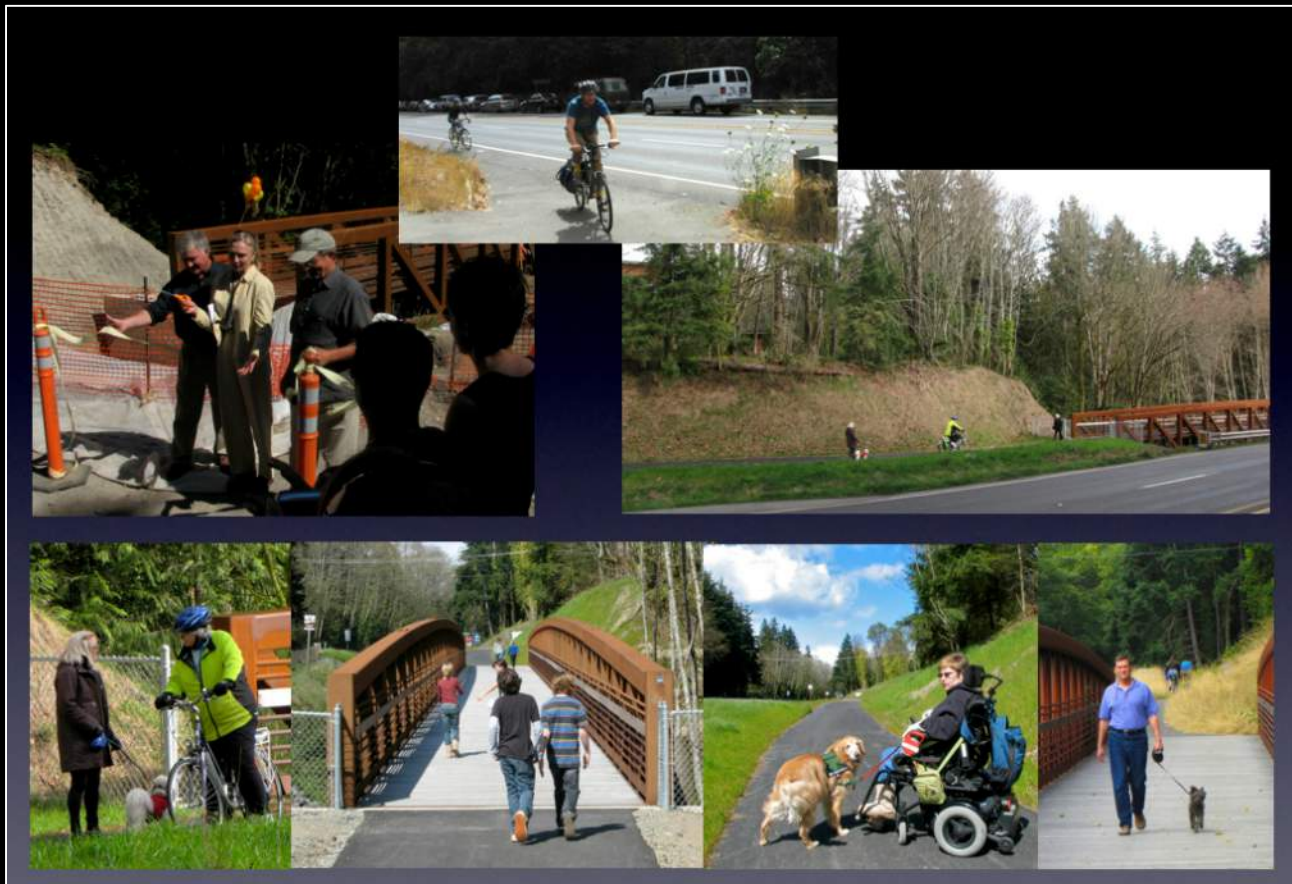
Construction Funding

Federal Funds	\$1,946,250	(86.5%)
City Funds	<u>\$ 303,750</u>	(13.5%)
Total	\$2,250,000	



Frequently Asked Questions

What are the benefits?



- Safe route to schools, parks, and shopping
- Reduces number of cyclists using the roadway
- Broader use by children, seniors, wheelchairs, and strollers.
- Public open space

Welcome to

Bainbridge Island

BAINBRIDGE

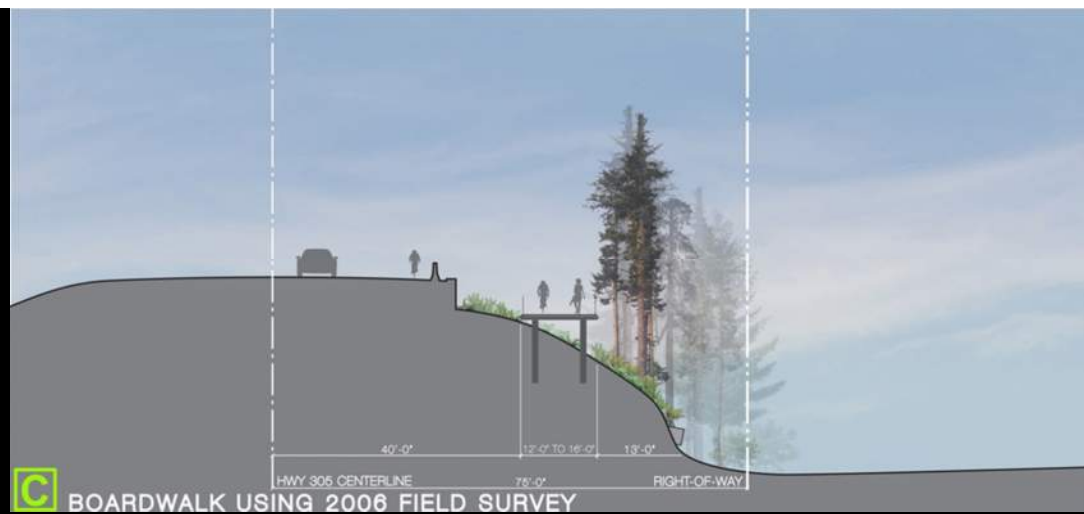


SHARES THE ROAD

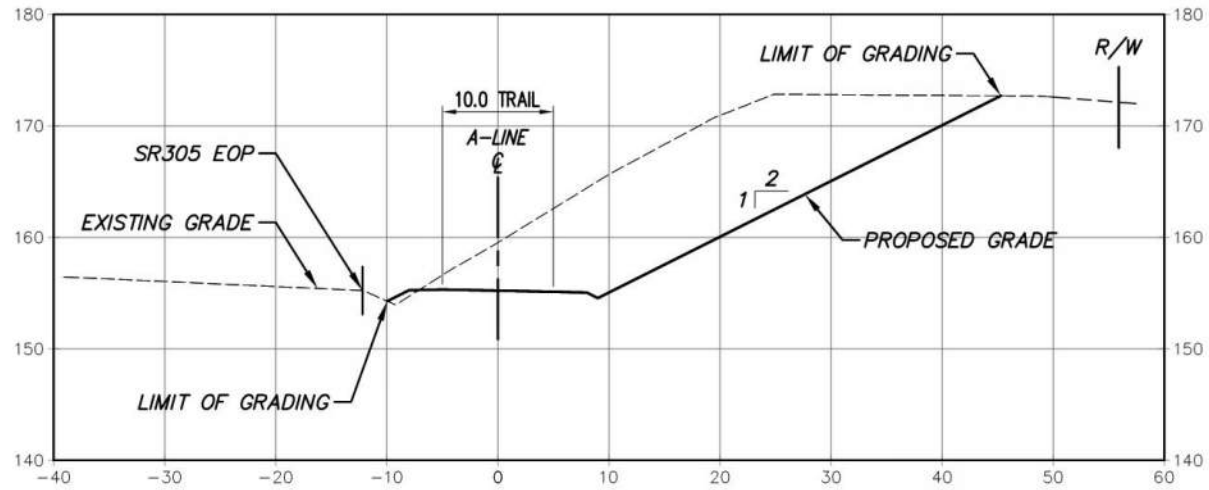
Bicycle
Friendly
Community

2008-2012

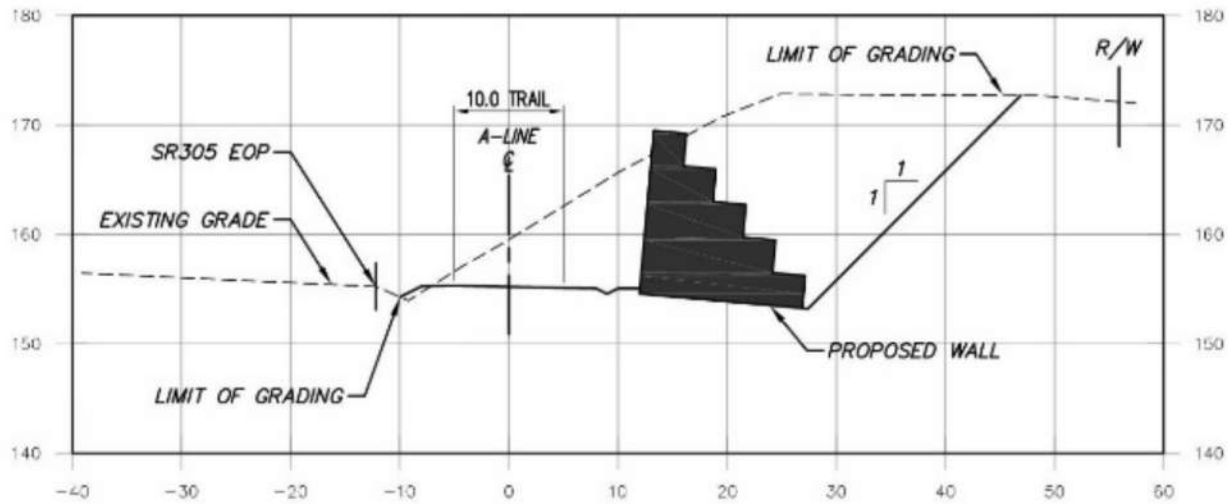




73+50.00



73+50.00

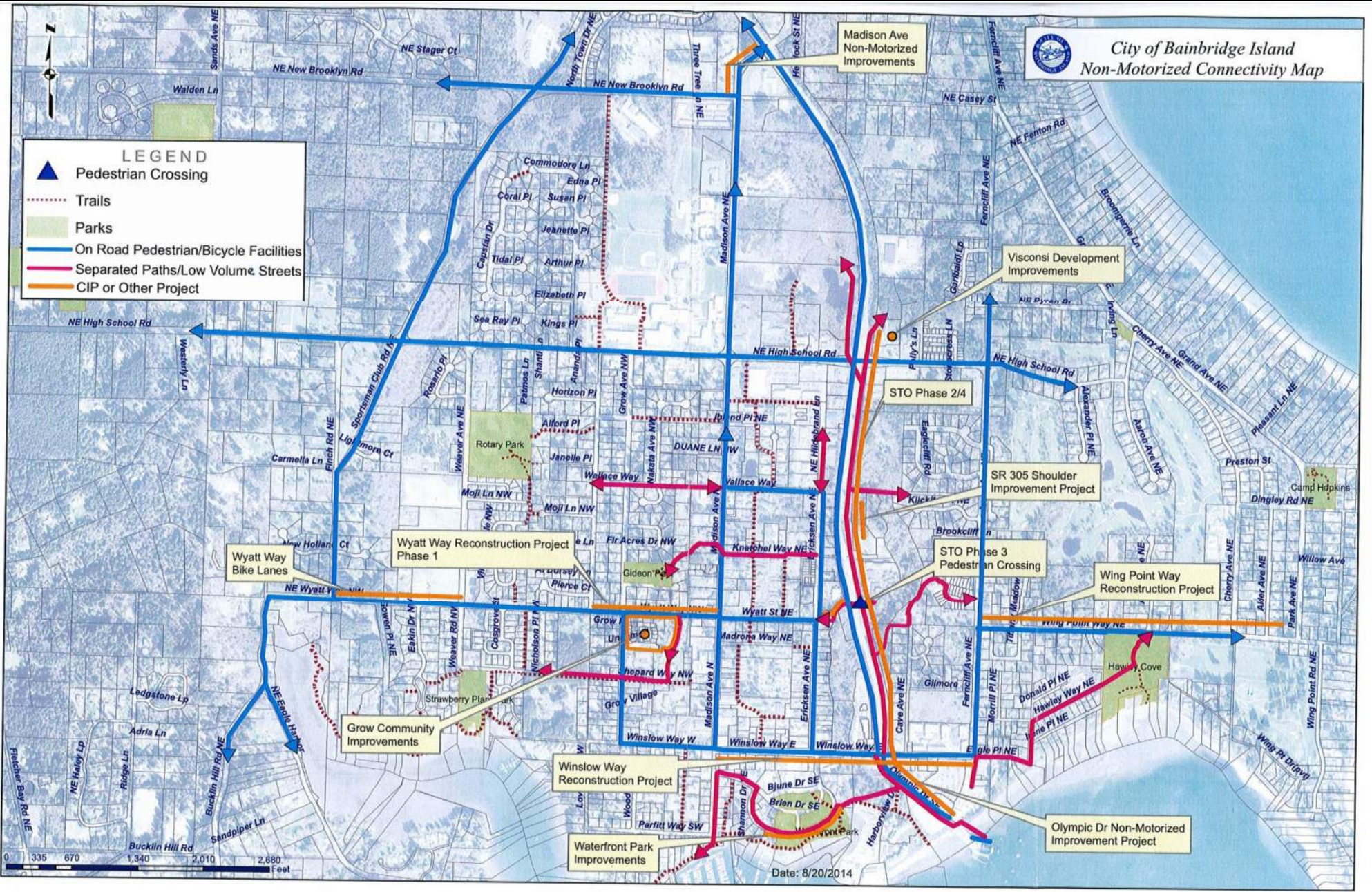




City of Bainbridge Island
Non-Motorized Connectivity Map

LEGEND

- Pedestrian Crossing
- Trails
- Parks
- On Road Pedestrian/Bicycle Facilities
- Separated Paths/Low Volume Streets
- CIP or Other Project



Date: 8/20/2014