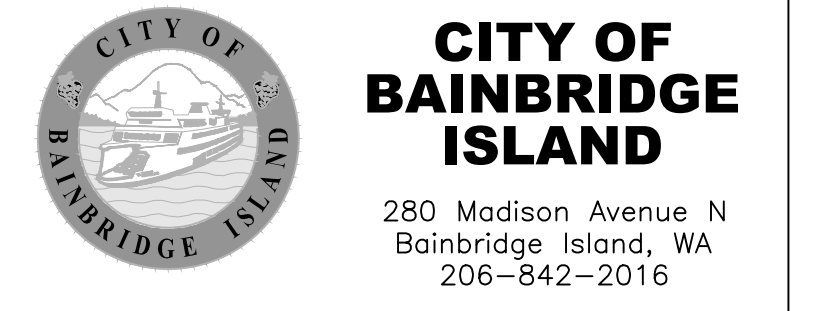
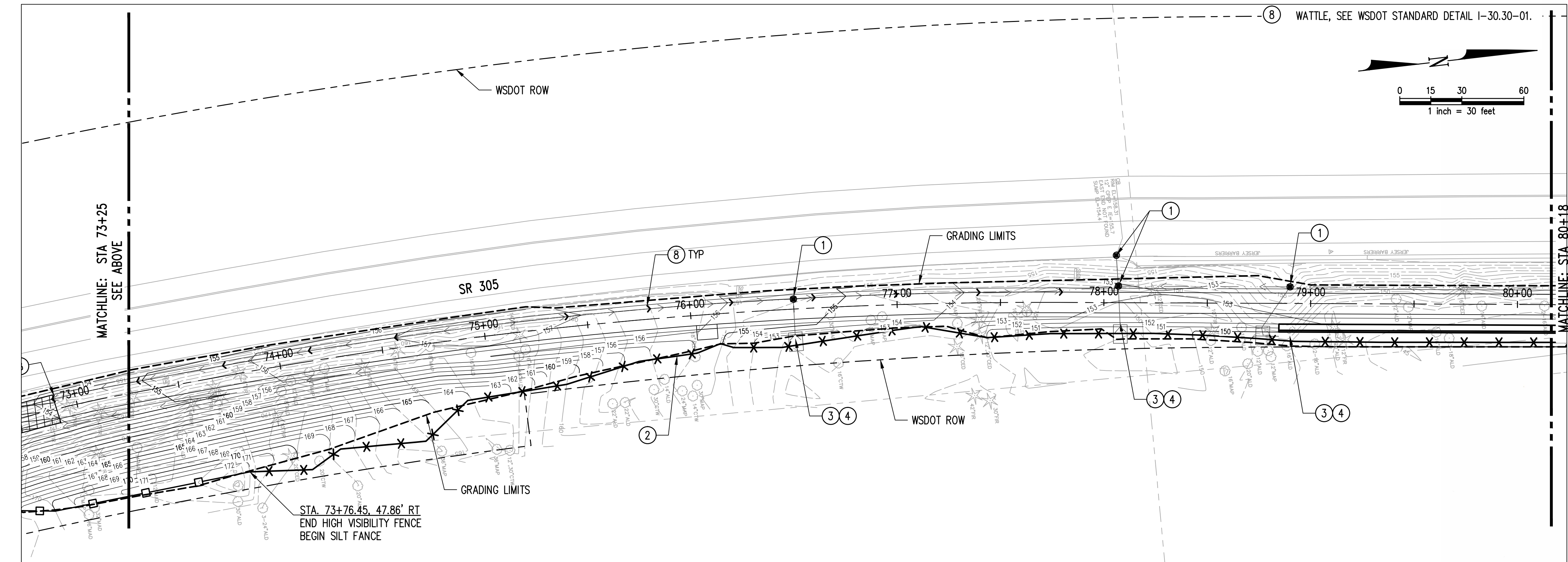
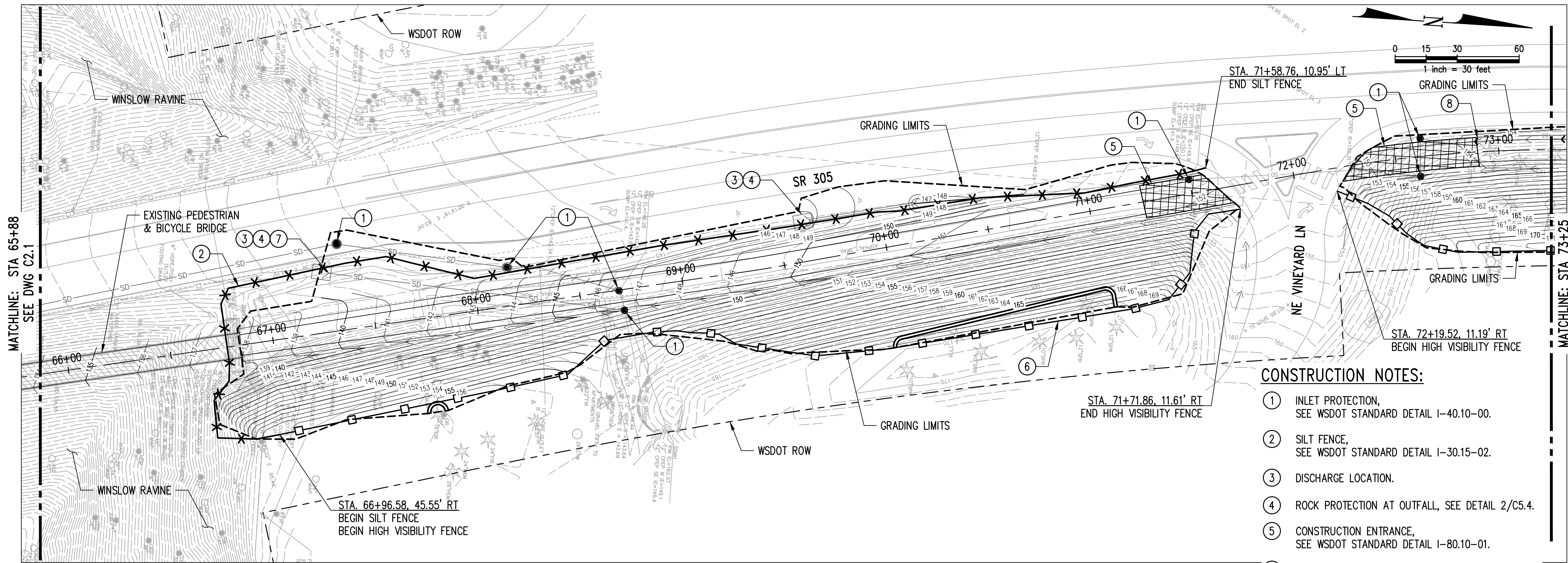


Path: Z:\14000-114400\114363 (Sound to Olympics Trail Ph II)\CADD\Design\01-TRAIL-TESS.dwg
 Plot Date: 10/11/2016 11:24 AM
 File Name: XREF Filename:

Drawn By: _____
 Checked By: _____
 Section: _____
 Surveyed By: _____
 Date: _____
 Control Monument: _____
 Field Bk/Pg: _____
 Recorded Survey: _____
 Kitsap County Auditor
 AF- _____
 Vol/Bk Page _____
 Constructed By: _____
 Date: _____



**PUBLIC WORKS
 ENGINEERING
 DEPARTMENT**

PROJECT INFORMATION

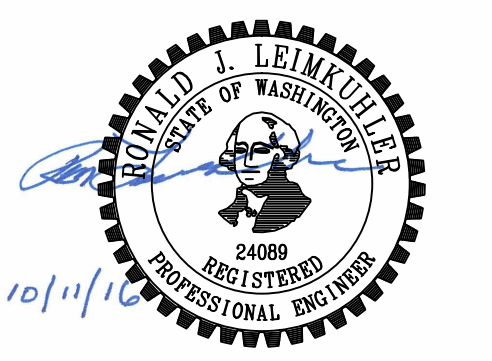
SOUND TO OLYMPICS TRAIL/
 SR 305 CORRIDOR
 ENHANCEMENTS,
 PHASE 2 & PHASE 4

REVISION BLOCK

NO.	DATE	BY	REVISION

SEC.26, T.25 N., R.2E., W.M.,
 CITY OF BAINBRIDGE ISLAND, KITSAP COUNTY, WA.
 Scale:
 Horiz:
 Vert:
 Coordinate System:
 Vertical Datum:
 Designed By: Z. GRAY
 Drawn By: A. MONTALVO
 Inspected By: R. LEIMKUHLER
 W.O. No.:
 Issue Date:

TESS PLAN



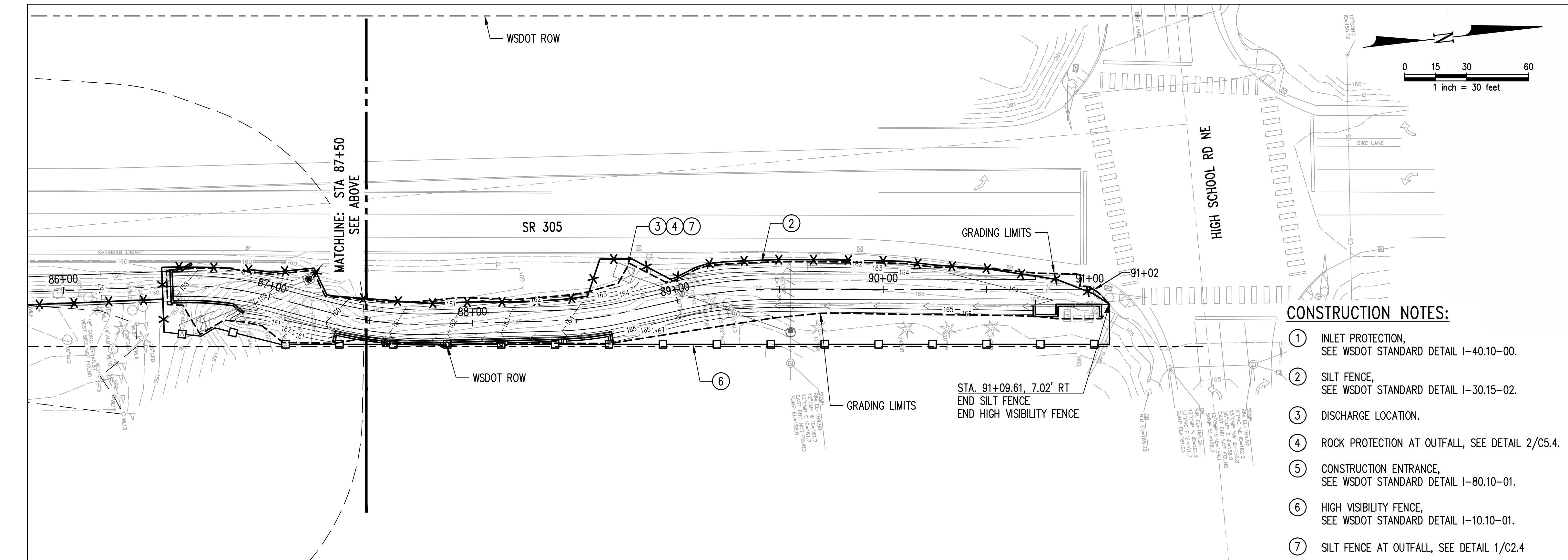
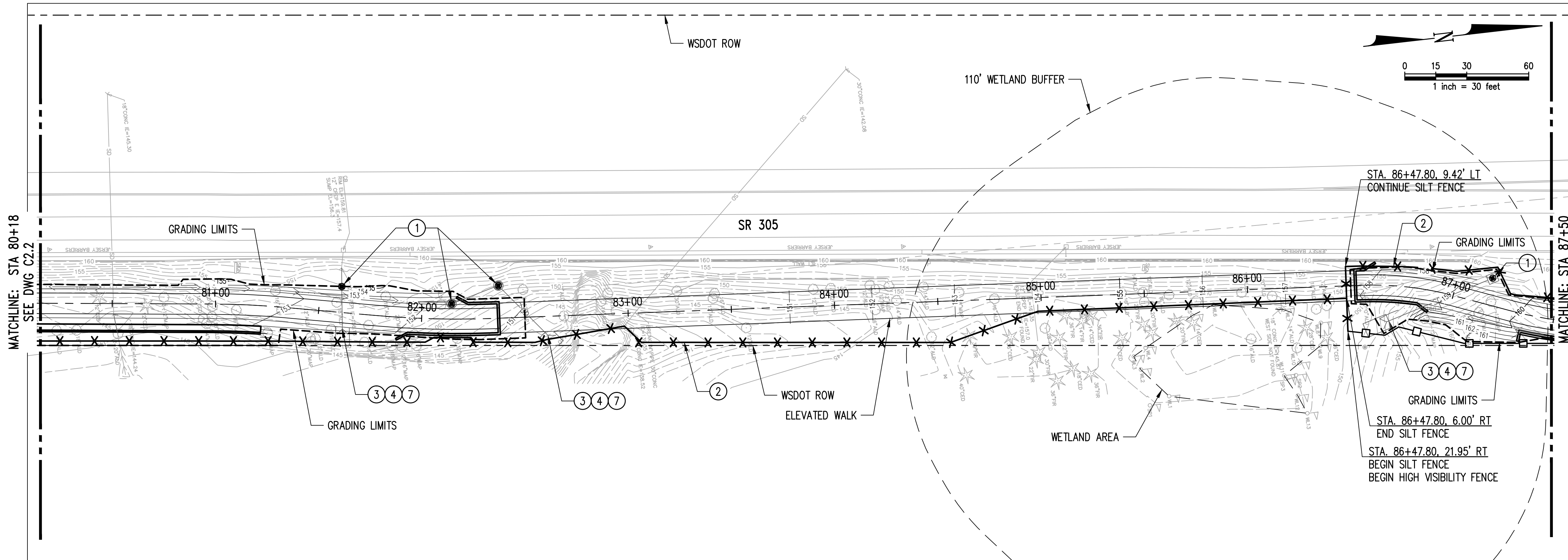
kpff 1601 5th Avenue, Suite 1600
 Seattle, WA 98101
 206.622.5822
 www.kpff.com

Drawing No. **C2.2**

Sheet No. **13** of **60**

Path: Z:\114000-114400\114363 (Sound to Olympics Trail Ph II)\CADD\Design\01-TRAIL-TESC.dwg
 Plot Date: 10/11/2016 11:24 AM
 File Name: XREF Filename:

Drawn By:	Checked By:	Surveyed By:	Control Monument:	Recorded Survey:	Constructed By:
			Field Bk/Pg:	Kitsap County Auditor	
Date:	Date:	Date:		AF-	Date:
				Vol/Bk Page	



CONSTRUCTION NOTES:

- ① INLET PROTECTION, SEE WSDOT STANDARD DETAIL I-40.10-00.
- ② SILT FENCE, SEE WSDOT STANDARD DETAIL I-30.15-02.
- ③ DISCHARGE LOCATION.
- ④ ROCK PROTECTION AT OUTFALL, SEE DETAIL 2/C5.4.
- ⑤ CONSTRUCTION ENTRANCE, SEE WSDOT STANDARD DETAIL I-80.10-01.
- ⑥ HIGH VISIBILITY FENCE, SEE WSDOT STANDARD DETAIL I-10.10-01.
- ⑦ SILT FENCE AT OUTFALL, SEE DETAIL 1/C2.4



CITY OF BAINBRIDGE ISLAND
 280 Madison Avenue N
 Bainbridge Island, WA
 206-842-2016

**PUBLIC WORKS
 ENGINEERING
 DEPARTMENT**

PROJECT INFORMATION

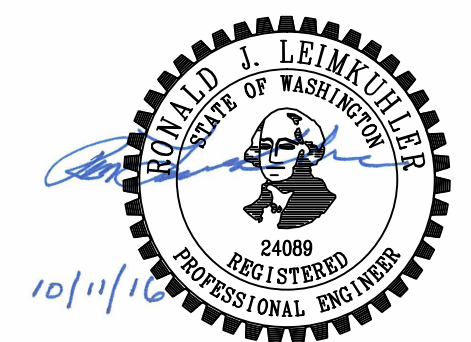
SOUND TO OLYMPICS TRAIL/
 SR 305 CORRIDOR
 ENHANCEMENTS,
 PHASE 2 & PHASE 4

REVISION BLOCK

NO.	DATE	BY	REVISION

SEC.26, T.25 N., R.2E., W.M.,
 CITY OF BAINBRIDGE ISLAND, KITSAP COUNTY, WA.
 Scale:
 Horiz:
 Vert:
 Coordinate System:
 Vertical Datum:
 Designed By: Z. GRAY
 Drawn By: A. MONTALVO
 Inspected By: R. LEIMKUEHLER
 W.O. No.:
 Issue Date:

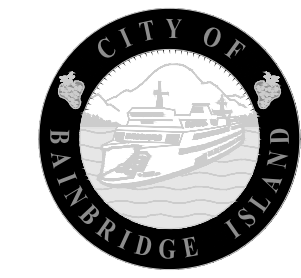
TESC PLAN



kpff 1601 5th Avenue, Suite 1600
 Seattle, WA 98101
 206.622.5822
 www.kpff.com

Drawing No. **C2.3**

Sheet No. **14** of **60**



CITY OF BAINBRIDGE ISLAND

280 Madison Avenue N
Bainbridge Island, WA
206-842-2016

**PUBLIC WORKS
ENGINEERING
DEPARTMENT**

PROJECT INFORMATION

SOUND TO OLYMPIC TRAIL
SR 305 CORRIDOR
ENHANCEMENTS
PHASE 2 & PHASE 4

REVISION BLOCK

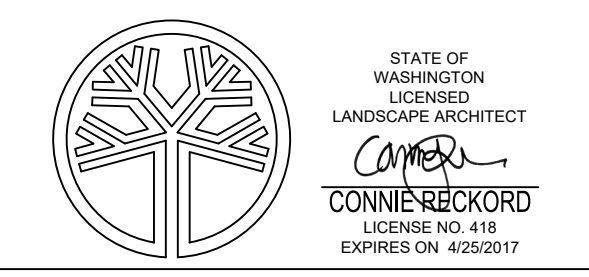
NO.	DATE	BY	REVISION

SEC. 26 , T. 25 N., R. 2 E., W.M.,
CITY OF BAINBRIDGE ISLAND, KITSAP COUNTY, WA.

Scale:
Horiz:
Vert:
Coordinate System:
Vertical Datum:
Designed By:
C RECKORD
Drawn By:
M STEWART
Inspected By:
W.O. No.:
Issue Date:

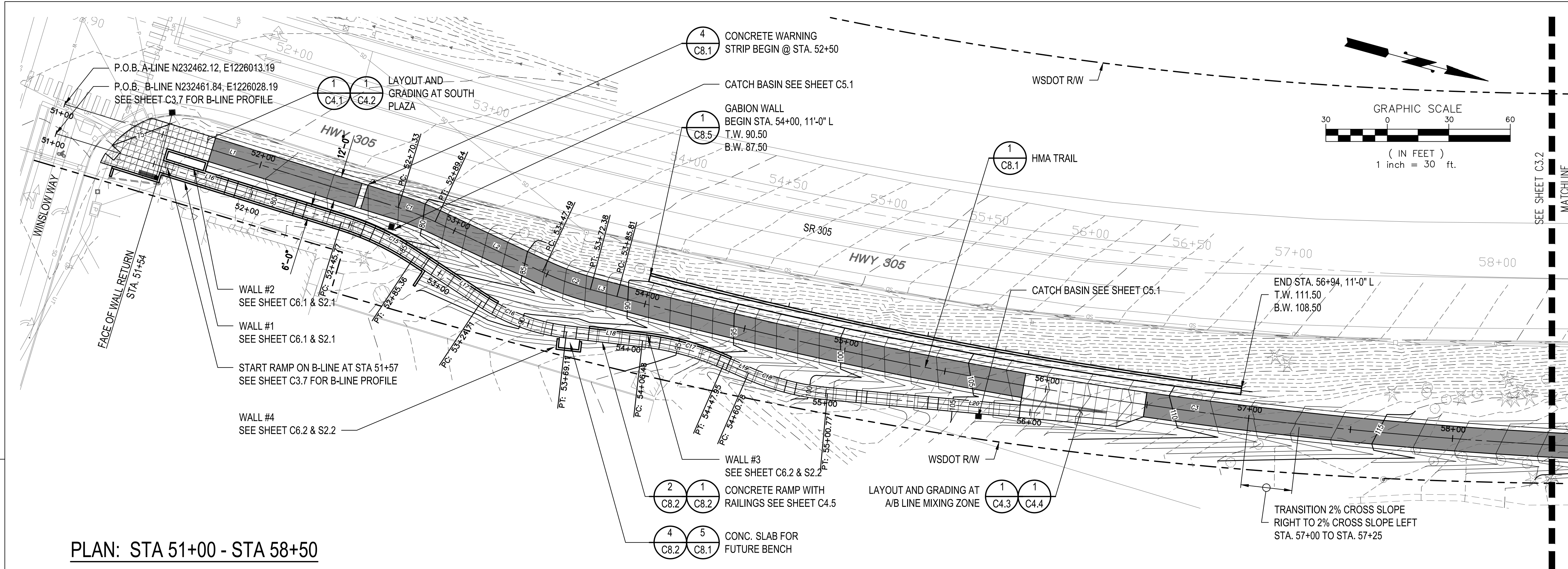
PLAN & PROFILE

**MacLeod
Reckord** PLLC
110 Prefontaine Place South, Suite 600
Seattle, Washington 98104
P 206-323-7919
F 206-323-9242

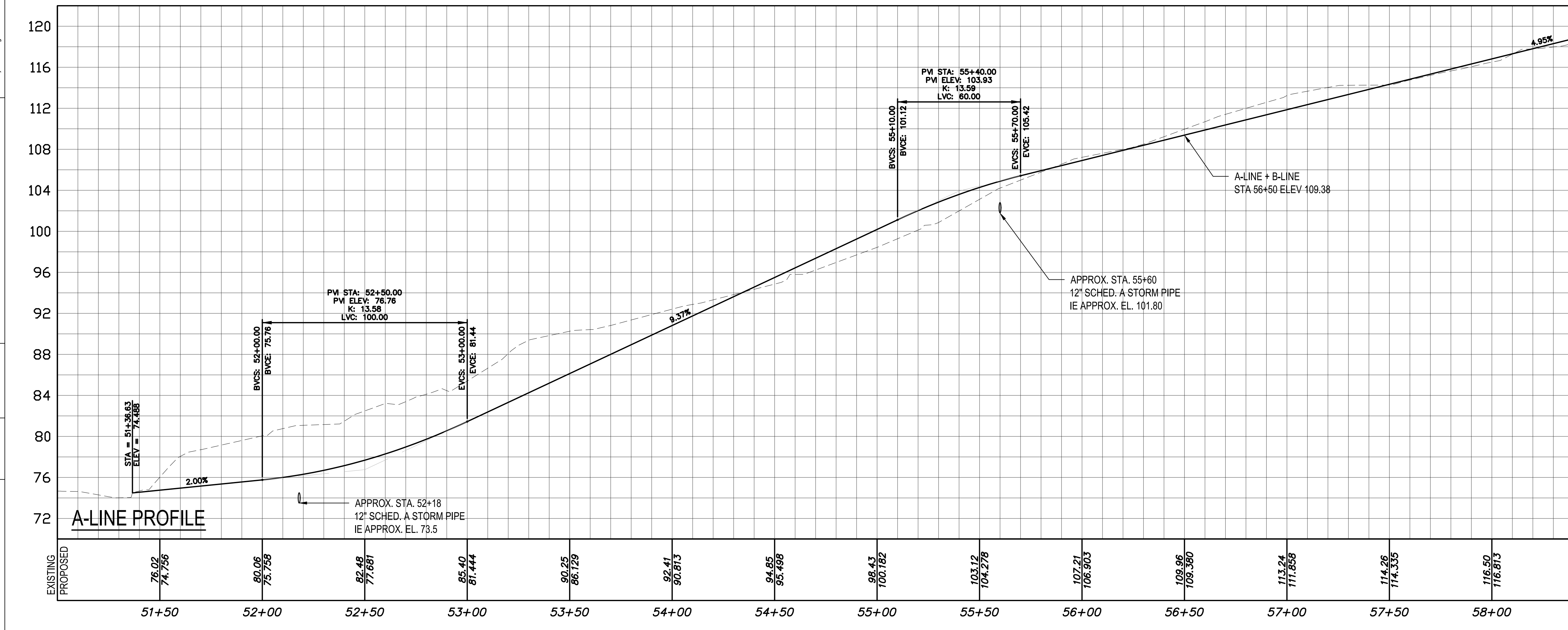


Drawing No. **C3.1**

Sheet No. 16 of 60

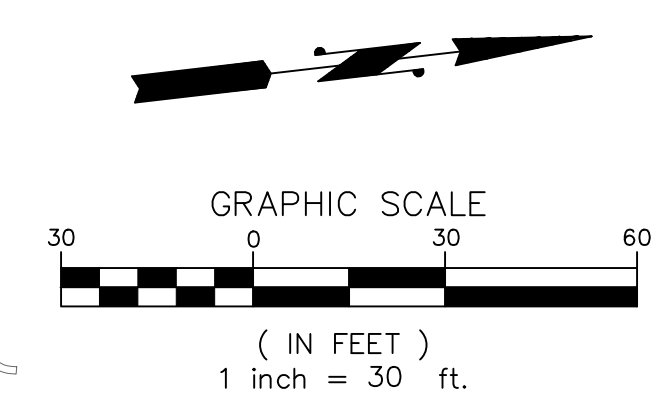
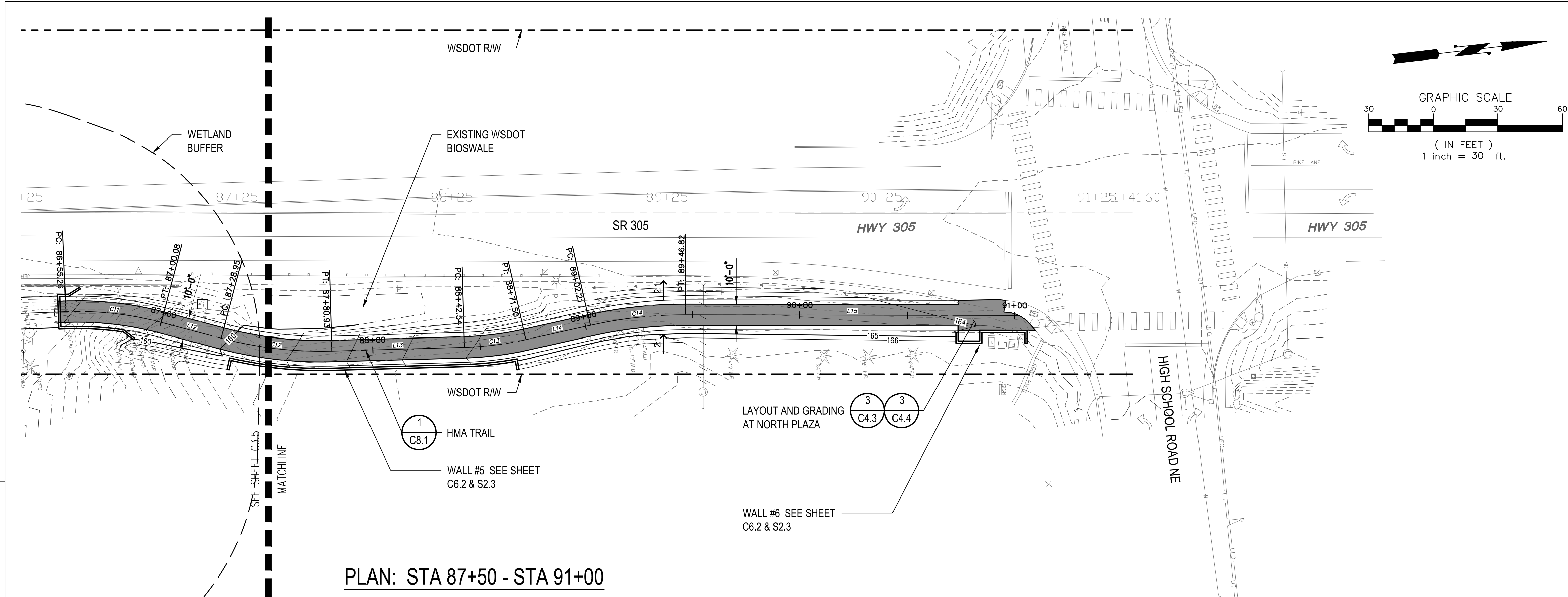


PLAN: STA 51+00 - STA 58+00

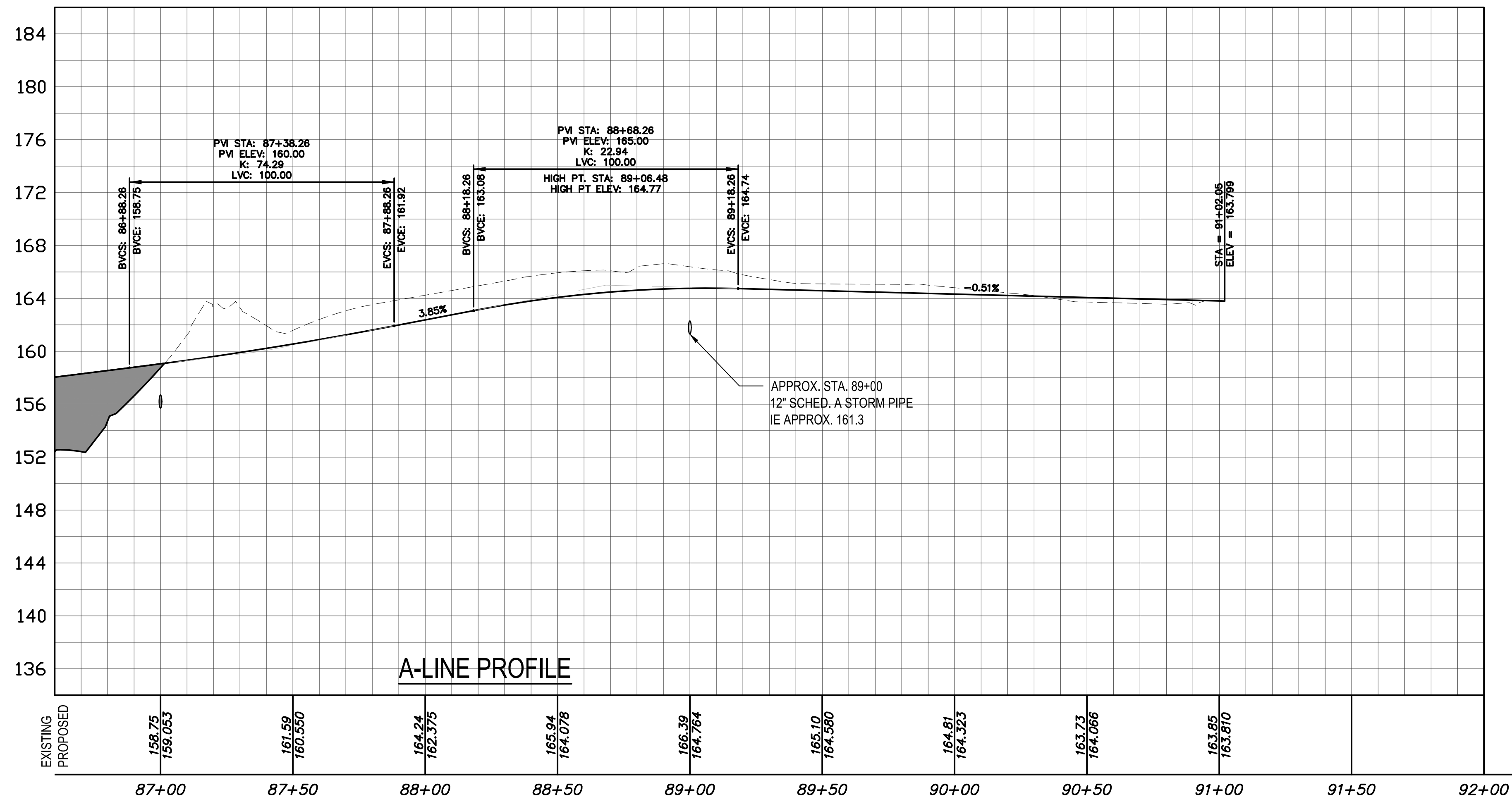


Path: Z:\Projects\Sound to Olympics Trail\Bainbridge\CAD Documents\Working\STO-PLAN PROFILE.dwg
Plot Date: 10/19/2016 8:38 AM
Cad User: Arielle Farina-Williams
Drawn By: _____
Checked By: _____
Section: _____
Date: _____
Control Monument: _____
Field Bk./Pg: _____
Recorded Survey: _____
Kitsap County Auditor
AF-
Vol./Bk./Page: _____
Constructed By: _____
Date: _____
XREF Filename: _____

Filename:	XREF Filename:
Drawn By:	Checked By:
Section:	
Surveyed By:	Date:
Control Monument:	Field Bk./Pg.:
Recorded Survey:	Vol./Bk./Page:
Kitsap County Auditor	AF-
Constructed By:	Date:



PLAN: STA 87+50 - STA 91+00



A-LINE PROFILE



**PUBLIC WORKS
ENGINEERING
DEPARTMENT**

PROJECT INFORMATION

SOUND TO OLYMPIC TRAIL
SR 305 CORRIDOR
ENHANCEMENTS
PHASE 2 & PHASE 4

REVISION BLOCK

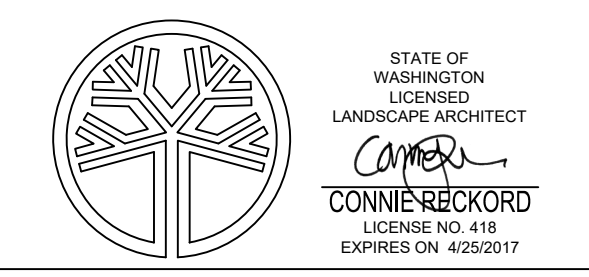
NO.	DATE	BY	REVISION

SEC. 26 , T. 25 N., R. 2 E., W.M.,
CITY OF BAINBRIDGE ISLAND, KITSAP COUNTY, WA.

Scale:
Horiz:
Vert:
Coordinate System:
Vertical Datum:
Designed By:
C RECKORD
Drawn By:
M STEWART
Inspected By:
W.O. No.:
Issue Date:

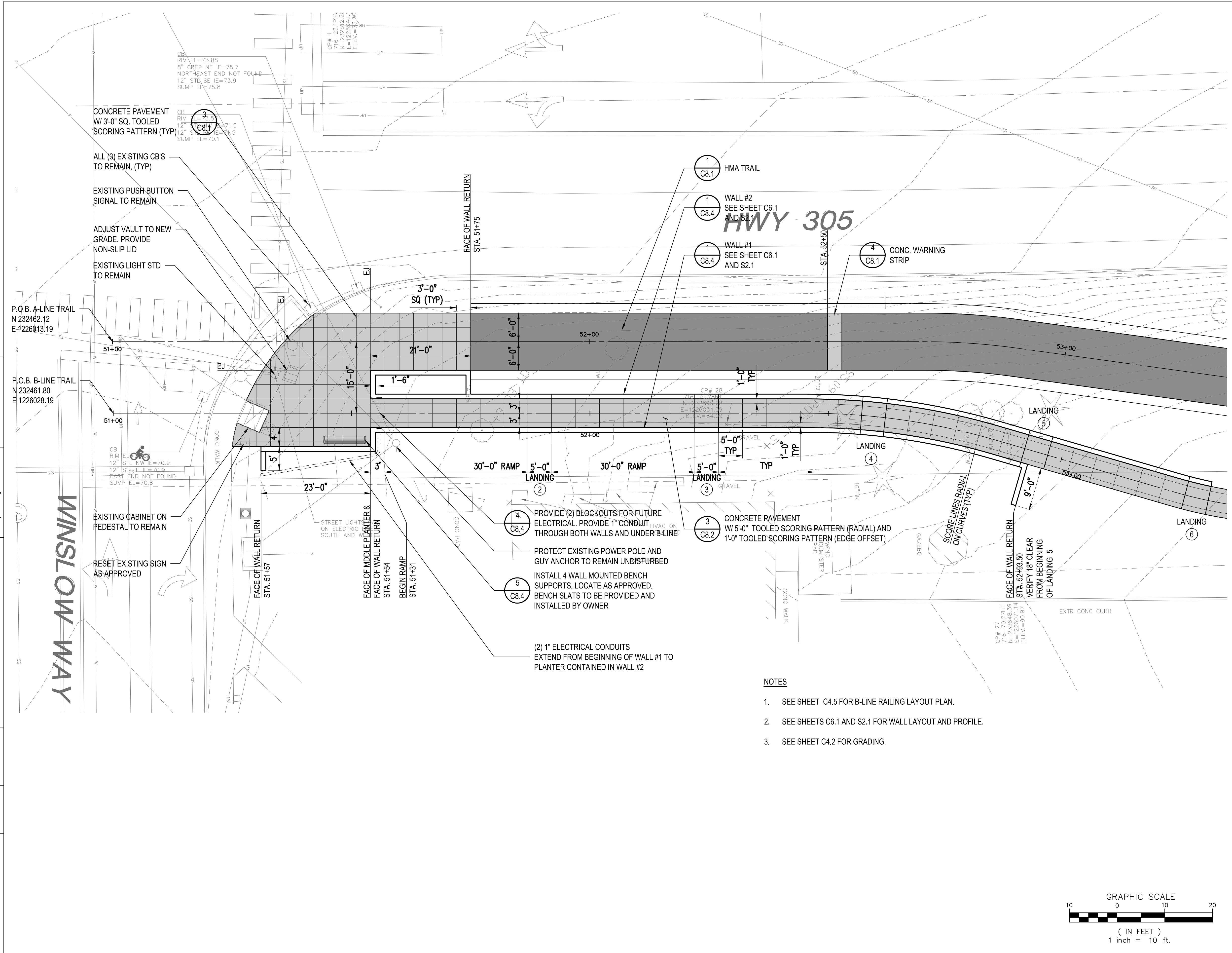
PLAN & PROFILE

**MacLeod
Reckord** PLLC
110 Prefontaine Place South, Suite 600
Seattle, Washington 98104
P 206-323-7919
F 206-323-9242

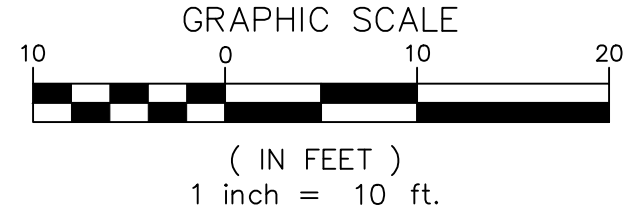


Drawing No. **C3.6**

Section:	Drawn By:	Checked By:	Surveyed By:	Control Monument:	Recorded Survey:	Constructed By:
					Kitsap County Auditor	
File Name:	XREF Filename:					



- NOTES**
- SEE SHEET C4.5 FOR B-LINE RAILING LAYOUT PLAN.
 - SEE SHEETS C6.1 AND S2.1 FOR WALL LAYOUT AND PROFILE.
 - SEE SHEET C4.2 FOR GRADING.



**PUBLIC WORKS
 ENGINEERING
 DEPARTMENT**

PROJECT INFORMATION

SOUND TO OLYMPIC TRAIL
 SR 305 CORRIDOR
 ENHANCEMENTS
 PHASE 2 & PHASE 4

REVISION BLOCK

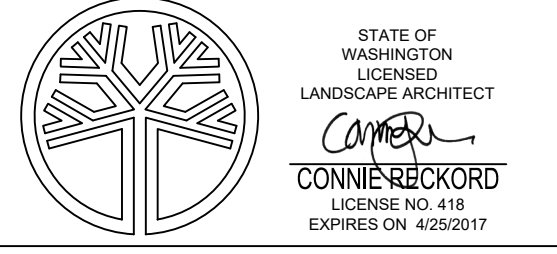
NO.	DATE	BY	REVISION

NO. DATE BY REVISION
 SEC.26 , T.25 N., R.2E., W.M.,
 CITY OF BAINBRIDGE ISLAND, KITSAP COUNTY, WA.

Scale:
 Horiz:
 Vert:
 Coordinate System:
 Vertical Datum:
 Designed By:
 C RECKORD
 Drawn By:
 M STEWART
 Inspected By:
 W.O. No.:
 Issue Date:

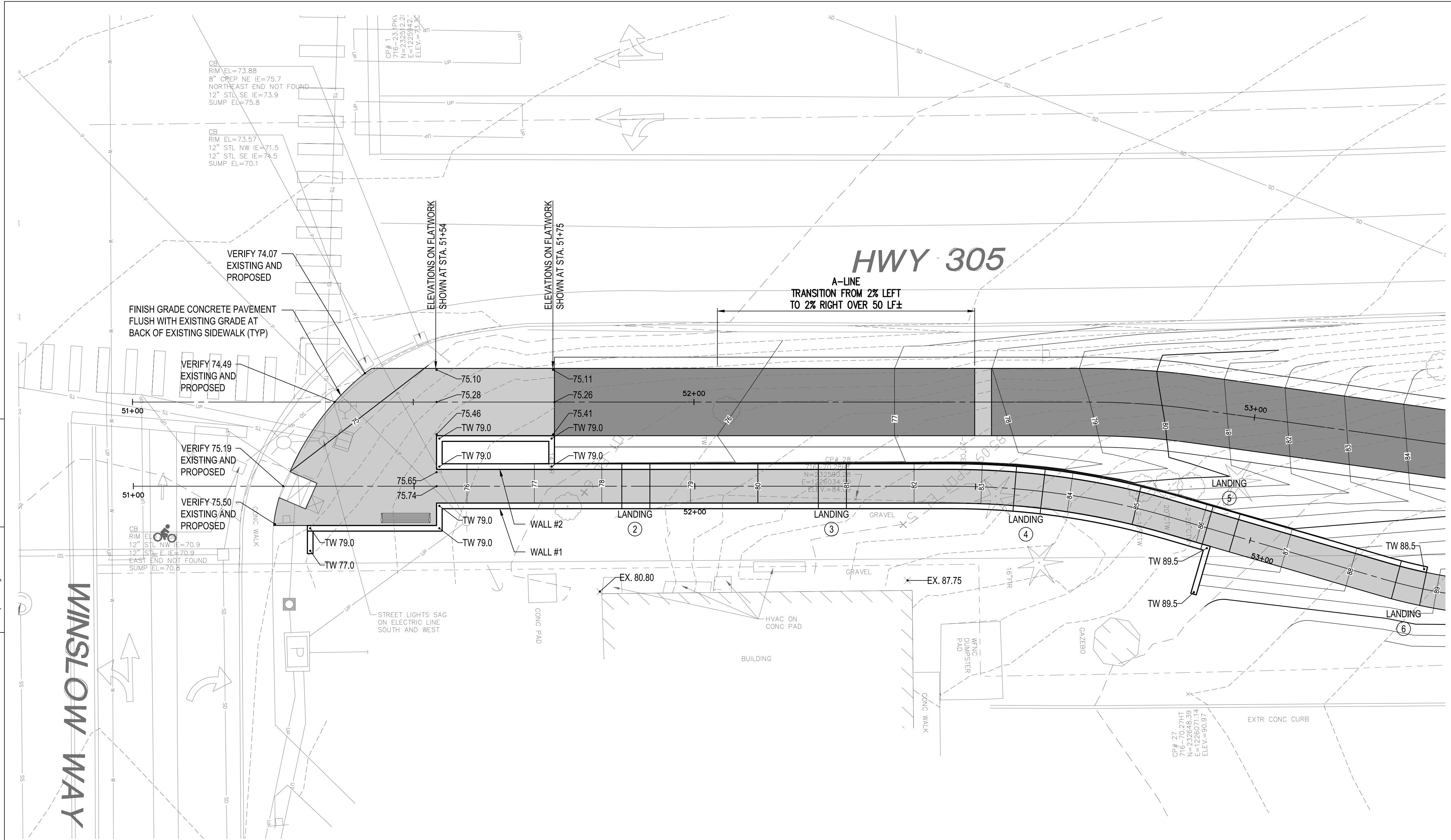
SOUTH PLAZA LAYOUT

**MacLeod
 Reckord** PLLC
 110 Prefontaine Place South, Suite 600
 Seattle, Washington 98104
 P 206-323-7919
 F 206-323-9242



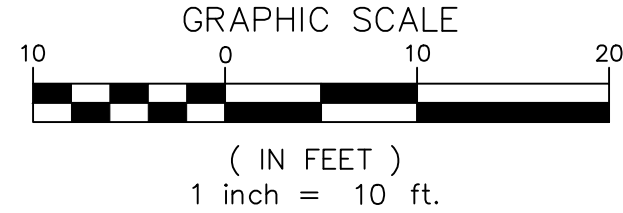
Drawing No. **C4.1**
 Sheet No. 23 of 60

Section:	Drawn By:	Checked By:	Surveyed By:	Control Monument:	Recorded Survey:	Constructed By:
					Kitsap County Auditor	
File Name:	XREF Filename:				AF-	
					Vol/Bk/ Page	
						Date:



NOTES

- SEE SHEET C4.5 FOR B-LINE RAILING LAYOUT PLAN.
- SEE SHEETS C6.1 AND S2.1 FOR WALL LAYOUT AND PROFILE.
- VERIFY SPOT ELEVATIONS SHOWN WHERE EXISTING SIDEWALK ABUTS NEW PAVEMENT WILL RESULT IN POSITIVE DRAINAGE TO EXISTING GUTTER.



**PUBLIC WORKS
 ENGINEERING
 DEPARTMENT**

PROJECT INFORMATION

SOUND TO OLYMPIC TRAIL
 SR 305 CORRIDOR
 ENHANCEMENTS
 PHASE 2 & PHASE 4

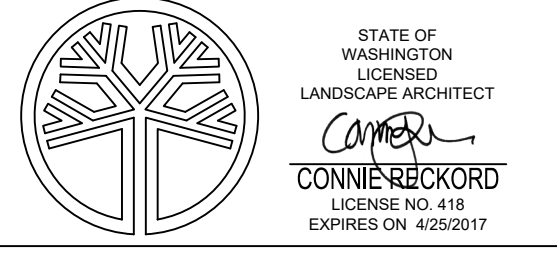
REVISION BLOCK

NO.	DATE	BY	REVISION

SEC.26 , T.25 N., R.2E., W.M., CITY OF BAINBRIDGE ISLAND, KITSAP COUNTY, WA.			
Scale:			
Horiz:			
Vert:			
Coordinate System:			
Vertical Datum:			
Designed By: C RECKORD			
Drawn By: M STEWART			
Inspected By:			
W.O. No.:			
Issue Date:			

SOUTH PLAZA GRADING

**MacLeod
 Reckord PLLC**
 110 Prefontaine Place South, Suite 600
 Seattle, Washington 98104
 P 206-323-7919
 F 206-323-9242



Drawing No.	C4.2
Sheet No.	24 of 60