

## CITY OF BAINBRIDGE ISLAND

280 MADISON AVENUE NORTH  
BAINBRIDGE ISLAND, WA 98110  
PHONE (206) 842-7633

### MacLEOD RECKORD

LANDSCAPE ARCHITECTS  
110 PREFONTAINE PLACE SOUTH, SUITE 600  
SEATTLE, WA 98104  
PHONE (206) 323-7919  
FAX (206) 323-9242

**KPFF CONSULTING ENGINEERS**  
CIVIL ENGINEERS  
1602 FIFTH AVE, SUITE 1600  
SEATTLE, WA 98101-3665  
PHONE (206) 622-5822  
FAX (206) 622-8130

**N. L. OLSON & ASSOCIATES, INC.**  
STRUCTURAL ENGINEERS  
2453 BETHEL AVE., P.O. BOX 637  
PORT ORCHARD, WA 98366  
PHONE (206) 895-2350

**ESA NORTHWEST BIOLOGICAL RESOURCES**  
ENVIRONMENTAL/PERMITTING  
5309 SHILSHOLE AVENUE NW, SUITE 200  
SEATTLE, WA 98107  
PHONE (206) 789-9658  
FAX (206) 789-9684

**HWA GeoSCIENCES INC**  
GEOTECHNICAL ENGINEERS  
21312 30TH DRIVE SW, SUITE 110  
BOTHELL, WA 98021-7010  
PHONE (425) 774-0106

**PACE, INC.**  
SURVEYORS  
11255 KIRKLAND WAY, SUITE 300  
KIRKLAND, WA 98033  
PHONE (425) 827-2014  
FAX (425) 827-5043

## SHEET INDEX

COVER	COVER SHEET	C6.1	WALL RAILING ELEVATIONS
G1.1	ABBREVIATIONS, NOTES, AND LEGENDS	C6.2	WALL RAILING ELEVATIONS
G1.2	TABLES AND SCHEDULES	C7.1	CROSS SECTIONS
G2.1	SURVEY	C7.2	CROSS SECTIONS
G2.2	SURVEY	C7.3	CROSS SECTIONS
G2.3	SURVEY	C8.1	CONSTRUCTION DETAILS
C1.1	DEMOLITION PLAN	C8.2	CONSTRUCTION DETAILS
C1.2	DEMOLITION PLAN	C8.3	CONSTRUCTION DETAILS
C1.3	DEMOLITION PLAN	C8.4	CONSTRUCTION DETAILS
C1.4	ENLARGED AREA DEMOLITION PLAN	C8.5	CONSTRUCTION DETAILS
C2.0	TESC AND STORM DRAINAGE NOTES	C8.6	CONSTRUCTION DETAILS
C2.1	TESC PLAN	C9.1	TRAFFIC CONTROL PLAN DETAILS
C2.2	TESC PLAN	C9.2	TRAFFIC CONTROL PLAN DETAILS
C2.3	TESC PLAN	C9.3	TRAFFIC CONTROL PLAN DETAILS
C2.4	TESC DETAILS	S1.1	GENERAL STRUCTURAL NOTES AND DETAILS
C3.1	PLAN AND PROFILE A-LINE Sta. 51+00 to Sta. 58+50	S2.1	WALL 1 AND 2 PLAN, PROFILE AND SECTION
C3.2	PLAN AND PROFILE A-LINE Sta. 58+50 to Sta. 65+90	S2.2	WALL 3 AND 4 PLAN, PROFILE AND SECTION
C3.3	PLAN AND PROFILE A-LINE Sta. 65+90 to Sta. 73+25	S2.3	WALL 5 AND 6 PLAN, PROFILE AND SECTION
C3.4	PLAN AND PROFILE A-LINE Sta. 73+25 to Sta. 80+20	S3.1	ELEVATED TRAIL PLANS
C3.5	PLAN AND PROFILE A-LINE Sta. 80+20 to Sta. 87+50	S3.2	ELEVATED TRAIL DETAILS 1
C3.6	PLAN AND PROFILE A-LINE Sta. 87+50 to Sta. 91+00	S3.3	ELEVATED TRAIL DETAILS 2
C3.7	PLAN AND PROFILE B-LINE Sta. 51+00 to Sta. 55+55	S3.4	ELEVATED TRAIL DETAILS 3
C4.1	SOUTH PLAZA LAYOUT	L1.1	PLANTING PLAN
C4.2	SOUTH PLAZA GRADING	L1.2	PLANTING PLAN
C4.3	ENLARGED AREA LAYOUT	L1.3	PLANTING PLAN
C4.4	ENLARGED AREA GRADING	L1.4	PLANTING PLAN ENLARGEMENTS
C4.5	B-LINE RAILING PLAN	L1.5	PLANTING SCHEDULE
C5.1	STORM DRAIN AND SR305 PAVING PLAN	L1.6	PLANTING DETAILS
C5.2	STORM DRAIN AND SR305 PAVING PLAN		
C5.3	STORM DRAIN AND SR305 PAVING PLAN		
C5.4	STORM DRAIN DETAIL		
C5.5	PAVING DETAIL		

## CITY OF BAINBRIDGE ISLAND OFFICIALS

### COUNCIL MEMBERS

ANNE BLAIR, MAYOR  
STEVE BONKOWSKI, AT LARGE  
SARAH BLOSSOM, SOUTH WARD  
WAYNE ROTH, CENTRAL WARD  
MICHAEL SCOTT, CENTRAL WARD  
VAL TOLLEFSON, NORTH WARD  
ROGER TOWNSEND, DEPUTY MAYOR, SOUTH WARD

### CITY MANAGER

DOUG SCHULZE

### PUBLIC WORKS DIRECTOR

BARRY LOVELESS, P.E.

### RECOMMENDED FOR APPROVAL

\_\_\_\_\_  
MARK EPSTEIN  
ENGINEERING PROJECT MANAGER

DATE

\_\_\_\_\_  
K. CHRIS HAMMER, P.E., P.M.P.  
ENGINEERING MANAGER

DATE

\_\_\_\_\_  
BARRY LOVELESS, P.E.  
PUBLIC WORKS DIRECTOR

DATE

FEDERAL AID PROJECT # TAP0305(20)

# SOUND TO OLYMPICS TRAIL

## SR 305 CORRIDOR ENHANCEMENTS, PHASE 2 AND PHASE 4

## CITY OF BAINBRIDGE ISLAND WASHINGTON

## OCTOBER 2016

Path: Z:\Projects\Sound to Olympics Trail\Bainbridge\CAD Documents\Working\STO-COVER.dwg  
 Plot Date: 10/19/2016 8:36 AM  
 Cad User: Arielle Fairina-Williams

Filename:	XREF Filename:
Drawn By:	Checked By:
Section:	
Surveyed By:	Date:
Control Monument:	Field Bk./Pg:
Recorded Survey:	Constructed By:
Kitsap County Auditor	AF-
Vol./Bk. Page	Date:

### ABBREVIATIONS

- HORIZONTAL CURVE DATA ABBREVIATIONS
  - R RADIUS TO CENTERLINE OF TRAIL
  - D DELTA ANGLE; THE INCLUDED ANGLE OF CURVE
  - T TANGENT LENGTH BETWEEN POINT OF CURVATURE AND POINT OF INTERSECTION (SAME AS DISTANCE BETWEEN POINT OF TANGENCY AND POINT OF INTERSECTION)
  - L LENGTH OF CURVE ALONG CENTERLINE
  - PC POINT OF CURVATURE
  - PT POINT OF TANGENCY
- VERTICAL CURVE DATA ABBREVIATIONS (SEE PROFILE)
  - AD ANGLE OF DEFLECTION
  - PVC POINT OF VERTICAL CURVATURE
  - PVT POINT OF VERTICAL TANGENCY
  - PVI POINT OF VERTICAL INTERSECTION
  - EL ELEVATION
  - VC VERTICAL CURVE
  - HP HIGH POINT
  - LP LOW POINT
  - K K-VALUE
  - BVCS BEGIN VERTICAL CURVE STATION
  - BVCE BEGIN VERTICAL CURVE ELEVATION
  - EVCS END VERTICAL CURVE STATION
  - EVCE END VERTICAL CURVE ELEVATION
- GENERAL ABBREVIATIONS

@	AT	IN.	INCH
AC	ASPHALT CURB	INC.	INCLUDED, INCLUDING
AC	ASPHALTIC CONCRETE	INST.	INSTALLED
ADD.	ADDITIVE	JT.	JOINT
ADJ.	ADJACENT	L	LEFT
ALT.	ALTERNATE	L.A.	LANDSCAPE ARCHITECT
APPROX.	APPROXIMATELY	LIGHTG	LIGHTING
ASPH.	ASPHALT	LF	LINEAR FEET
AVE.	AVENUE	MAX.	MAXIMUM
B.C.	BOTTOM OF CURB	MIN.	MINIMUM
CAL.	CALIPER	MISC.	MISCELLANEOUS
CB	CATCH BASIN	MFR.	MANUFACTURER
C.F.	CUBIC FEET	MSE	MECHANICALLY STABILIZED EMBANKMENT
C.I.P.	CAST-IN-PLACE	N	NORTH
CJ	CONTROL JOINT	N/A	NOT APPLICABLE
CL	CENTER LINE	N.I.C.	NOT IN CONTRACT
CLR.	CLEAR	NO.	NUMBER
COL.	COLUMN	NTS	NOT TO SCALE
CONC	CONCRETE	NW	NORTHWEST
COS	CITY OF SHORELINE	O.C.	ON CENTER
CPEP	CORRUGATED POLYETHYLENE PIPE	OFF.	OFFSET
CSBC	CRUSHED SURFACING BASE COURSE	PED.	PEDESTRIAN
CSTC	CRUSHED SURFACING TOP COURSE	PERF.	PERFORATED
DCV	DOUBLE CHECK VALVE	POB	POINT OF BEGINNING
DIA., DIAM.	DIAMETER	POC	POINT OF CONNECTION
DIM.	DIMENSIONED	PSI	POUNDS PER SQUARE INCH
DWGS.	DRAWINGS	PVMT.	PAVEMENT
E	EAST	QTY.	QUANTITY
EA.	EACH	R. RT.	RIGHT
EJ	EXPANSION JOINT	RAD.	RADIUS
ELEV.	ELEVATION	R.O.W., R-O-W	RIGHT-OF-WAY
EQ.	EQUAL	S	SLOPE
E-W, E/W	EAST TO WEST	SCH.	SCHEDULE
EX., EXIST., EXISTG	EXISTING	SHT.	SHEET
EXP.	EXPANSION	SIM.	SIMILAR
FIN.	FINISH	SPEC	SPECIFICATIONS
FIXT.	FIXTURE	SQ.	SQUARE
FT.	FOOT, FEET	ST.	STREET
FTG.	FOOTING	STA.	STATION
GA.	GAUGE	STD., STD.	STANDARD
GAL.	GALLON	T	TALL
GALV.	GALVANIZED	TC	TOP OF CURB
GPM	GALLONS PER MINUTE	TEL.	TELEPHONE
GRAD'G	GRADING	TW	TOP OF WALL
H, HORIZ.	HORIZONTAL	TYP.	TYPICAL
HEX	HEXAGONAL	V. VERT.	VERTICAL
HMA	HOT MIX ASPHALT	W	WEST
HP	HIGH POINT	W	WIDE
HR.	HOUR	W/	WITH
HSS	HOLLOW STRUCTURAL SECTION	WWM	WOVEN WIRE MESH
HT.	HEIGHT		
IE	INVERT ELEVATION		

### NOTES

- #### SURVEY NOTES
- BASIS OF MERIDIAN: WASHINGTON STATE PLANE COORDINATE SYSTEM, NORTH ZONE 4601, NAD 83/2011 BASED ON GPS MEASUREMENTS CONSTRAINED TO THE WASHINGTON STATE REFERENCE NETWORK.
  - VERTICAL DATUM: NAVD 88 BASED ON GPS MEASUREMENTS CONSTRAINED TO THE WASHINGTON STATE REFERENCE NETWORK.
  - UTILITY NOTE: UTILITIES SHOWN BASED ON TOPOGRAPHIC SURVEY OF THE SITE SURFACE FEATURES AND UNDERGROUND UTILITY LOCATES. ALL UTILITIES. ALL UTILITIES SHOWN HEREON SHOULD BE CONSIDERED APPROXIMATE ONLY. NO UNDERGROUND UTILITIES WERE LOCATED BY THE UTILITY LOCATOR ALONG HIGHWAY 305.
  - BOUNDARY NOTE: THIS IS NOT A BOUNDARY SURVEY, THE BOUNDARY LINES SHOWN HEREON ARE PER BEST AVAILABLE RECORD INFORMATION. THE GULCH AND HIGHWAY 305 ARE SHOWN IN COMBINATION WITH RECORD INFORMATION PER THE WSDOT PLANS DATED AUGUST 25, 1958 AND RECORDS OF SURVEY.
  - METHOD OF SURVEY: ALL WORK PERFORMED DURING THE COURSE OF THIS SURVEY MEETS OR EXCEEDS THE STANDARDS AS SET FORTH IN WAC 332-130-090. EQUIPMENT USED WAS TRIMBLE S6 TOTAL STATIONS AND TOPCON HIPER SR GPS RECEIVERS.
  - SURVEY COMPLETED IN JANUARY 2015

### DEMOLITION NOTES

- REMOVE ALL EXISTING MATERIAL AS REQUIRED FOR NEW CONSTRUCTION, WHETHER SPECIFICALLY NOTED OR NOT.

### GENERAL TESC NOTES

- WITHIN THE CITY, ALL REQUIRED RETENTION/DETENTION, SEDIMENTATION AND EROSION CONTROL FACILITIES MUST BE CONSTRUCTED AND IN OPERATION, PRIOR TO LAND AND/OR OTHER CONSTRUCTION ACTIVITIES, TO INSURE THAT SEDIMENT-LADEN WATER AND STORM DRAINAGE RUN-OFF DOES NOT IMPACT THE ADJACENT PROPERTIES OR THE NATURAL DRAINAGE WAYS.
- THE RETENTION/DETENTION, SEDIMENTATION AND EROSION CONTROL FACILITIES DEPICTED ON THESE DRAWINGS ARE INTENDED TO BE MINIMUM REQUIREMENTS NEEDED TO MEET ANTICIPATED SITE CONDITIONS. ADDITIONAL DRAINAGE AND EROSION CONTROL FACILITIES MAY BE REQUIRED AS SITUATIONS WARRANT DURING CONSTRUCTION. THE IMPLEMENTATION, MAINTENANCE, REPLACEMENT AND ADDITIONS TO THESE CONTROL SYSTEMS SHALL BE THE RESPONSIBILITY OF THE PERMIT HOLDER.
- FOR GRADING AND FILLING PROJECTS ASSOCIATED WITH A BUILDING PERMIT, THE TEMPORARY DRAINAGE CONTROL MEASURES SHALL REMAIN IN PLACE UNTIL THE PERMANENT STORM SYSTEM IS IN PLACE AND OPERATIONAL AND A CONVERSION FROM THE TEMPORARY TO PERMANENT SYSTEM CAN BE MADE.
- ALL TEMPORARY EROSION CONTROL FACILITIES, INCLUDING THE PERIMETER CONTROLS, SHALL REMAIN IN PLACE UNTIL FINAL SITE CONSTRUCTION IS COMPLETED AND APPROVAL HAS BEEN RECEIVED FROM THE CITY.
- ON PROJECTS WITH FILL AND GRADING PERMITS ONLY, AND FOR WHICH NO SUBSEQUENT BUILDING PERMIT HAS BEEN ISSUED, RECORD DRAWING OF THE TESC PLAN WILL BE REQUIRED UPON COMPLETION OF GRADING ACTIVITIES.
- WHEN PROJECT IS COMPLETED AND SITE IS FINALLY STABILIZED, ALL TEMPORARY EROSION CONTROL MEASURES SHALL BE REMOVED.

### LAYOUT NOTES

- CONTRACTOR SHALL STAKE (MIN. 100' O.C.) EASTERN EDGE OF WSDOT R.O.W. BETWEEN THE FOLLOWING STATIONS PRIOR TO START OF DEMOLITION:  
 STA. 51+25 TO STA. 56+00  
 STA. 58+00 TO STA. 60+00  
 STA. 72+50 TO STA. 76+00  
 STA. 79+00 TO STA. 82+50  
 STA. 87+00 TO STA. 89+00
- STAKE OR PAINT LOCATION OF THE FOLLOWING ELEMENTS FOR APPROVAL PRIOR TO CONSTRUCTION.
  - A. LIMIT OF GRADING
  - B. LIMIT OF INVASIVE PLANT REMOVAL AND MOW / BRUSH CUT AREA
  - C. TRAIL CENTERLINE AND TRAIL SUBGRADE
  - D. ELEVATED TRAIL ABUTMENTS, WALLS AND LIMITS OF GRADING
  - E. CATCH BASINS, CULVERTS & VAULTS.
  - F. BENCHES & TRASH RECEPTACLES
  - G. SIGNS AND PAINTED MARKINGS
  - H. LIMITS OF WORK AT PROPOSED STAGING/STOCKPILE AREAS
  - I. OTHER ITEMS AS NOTED ON DRAWINGS
- TRAIL STATIONING IS INTENDED FOR EASE OF COMMUNICATION DURING CONSTRUCTION PROCESS AND MAY NOT NECESSARILY REFLECT ACCURATE MEASUREMENTS.
- TRAIL CURVE DATA IS PROVIDED FOR INITIAL LAYOUT AND MAY BE ADJUSTED AS APPROVED BY OWNER'S REPRESENTATIVE TO CONFORM WITH ACTUAL SITE CONDITIONS.

### LAYOUT NOTES CONT.

- TRAIL LAYOUT AND GRADING SHALL BE HORIZONTALLY AND VERTICALLY SMOOTH AND WITHOUT SHARP CURVES OR ABRUPT CHANGES IN GRADE.
- STATIONING SHALL BE MARKED IN THE FIELD IN A PROMINENT AND DURABLE MANNER, AND AS APPROVED BY THE OWNER'S REPRESENTATIVE. FIELD MARKING SHALL REMAIN IN PLACE UNTIL CONTRACTOR IS AUTHORIZED TO REMOVE IT.
- ALL DIMENSIONS AND COORDINATE REFERENCES ARE TO FACE OF CURB UNLESS OTHERWISE NOTED.

### UTILITIES

- VERIFY LOCATION OF ALL UNDERGROUND UTILITIES PRIOR TO BEGINNING WORK. NOTIFY OWNER'S REPRESENTATIVE OF ANY CONFLICTS.
- CALL BEFORE YOU DIG: 1.800.424.5555

### RESTORATION NOTES

- SEED ALL DISTURBED AREAS NOT DESIGNATED FOR OTHER IMPROVEMENTS.
- RESTORE ALL AREAS USED FOR STAGING, STOCKPILING AND ACCESS TO CORRIDOR AS SPECIFIED.

### PLANTING NOTES

- STAKE LOCATIONS OF ALL TREES AND PLANT BEDS FOR APPROVAL PRIOR TO PLANTING. ADJUST LOCATIONS OF SHRUBS IN FIELD AS DIRECTED BY OWNER'S REPRESENTATIVE.
- PRESERVE AND PROTECT ALL EXISTING VEGETATION TO REMAIN. AVOID DRIVING POSTS OR STAKES INTO MAJOR ROOTS.
- LARGE TREES SHALL BE PLANTED MINIMUM 14' FROM EDGE OF PAVED TRAIL.
- MEDIUM TREES SHALL BE PLANTED MINIMUM 8' FROM EDGE OF PAVED TRAIL.
- MAXIMUM CONTINUOUS AREA IN SHRUB ZONES THAT MAY BE UNPLANTED IS 25 S.F.

### STORM DRAINAGE NOTES

- STORM LINE SHALL BE LAD TO THE GRADES AND ELEVATIONS SHOWN ON THE DRAWINGS AND SHALL NOT BE CHANGED WITHOUT CITY APPROVAL.
- ALL MANHOLES AND CATCH BASINS IN PUBLIC RIGHT-OF-WAY OF EASEMENTS HALL BE ADJUSTED TO FINAL GRADE DURING OR AFTER FINAL PAVING, IN ACCORDANCE WITH THE CITY'S STANDARD.

### GRADING NOTES

- VERIFY GRADES OF ALL EXISTING STRUCTURES THAT AFFECT NEW CONSTRUCTION.
- ADJUST ALL EXISTING MANHOLES AND UTILITY COVERS TO NEW FINISH GRADE.
- TRAIL CROSS-SLOPE CANNOT EXCEED 2%

### PAVING NOTES

- SAW CUT EXISTING ASPHALT TO PROVIDE CLEAN EDGE WHERE NEW AC ABUTS EXISTING. REFER TO SPECS FOR TREATMENT AT JOINTS.

### ACCESS AND TRAFFIC NOTES

- CONTRACTOR SHALL BE RESPONSIBLE FOR TRAFFIC CONTROL PLANS TO SATISFY WSDOT PERMIT REQUIREMENTS AND ALL INTERIM TRAFFIC CONTROL DURING CONSTRUCTION.
- LOCATION FOR STAGING AREAS AND STOCKPILES SHALL BE AS APPROVED BY THE OWNER AND MAY NOT CONFLICT WITH WORK OF OTHER CONTRACTS, RESIDENTIAL OR BUSINESS ACCESS. STAGING AND STOCKPILES SHALL BE OUTSIDE OF SR305 CLEAR ZONE. (10' FOR 35 MPH OR LESS; 15' FOR 40 MPH).
- A HAUL ROUTE PLAN MUST BE PREPARED AND SUBMITTED PRIOR TO BEGINNING CONSTRUCTION. THE HAUL ROUTE PLAN SHALL ADDRESS ROUTING, SIGNAGE AND FLAGGING, DAILY MAINTENANCE, AND ANTICIPATED DURATION.

### LEGEND EXISTING

	WATER VALVE
	HYDRANT
	WATER METER
	MANHOLES (SS/SD)
	CB
	POWER/UTILITY POLE
	GUY ANCHOR
	POWER TRANSFORMER
	POWER/TELEPHONE VAULT
	POWER METER
	TELEPHONE/TV RISER
	GAS VALVE
	GAS METER
	STREET LIGHT
	LUMINAIRE
	SPOT ELEVATION
	SIGN
	MAILBOX
	ROCKERY
	CONIFEROUS TREE
	DECIDUOUS TREE
	FOUND CASSED MONUMENT
	SET MAGNETIC NAIL W/ WASHER
	SET 5/8" IRON REBAR W/ PLASTIC CAP STAMPED L.S. #----- UNLESS OTHERWISE STATED.
	CENTER LINES
	PROPERTY LINES
	RIGHT-OF-WAY LINES
	LOT LINES
	DITCH LINE
	FLOW LINE
	WATER LINE
	SANITARY SEWER LINE
	STORM DRAIN LINE
	GAS LINE
	UNDERGROUND POWER LINES
	UNDERGROUND TELEPHONE LINES
	UNDERGROUND CABLE TV LINES
	UNDERGROUND FIBER OPTIC LINES
	OVERHEAD POWER LINES
	OVERHEAD UTILITY LINES
	CHAIN LINK FENCE
	WIRE FENCE
	WOOD FENCE
	CONTOUR
	RIGHT-OF-WAY

### PROPOSED

	LIMIT OF GRADING
	R.O.W. AS LIMIT OF WORK
	DITCH/CREEK CENTERLINE
	HMA SURFACE
	CONCRETE SURFACE W/ SCORE LINES
	CONSTRUCTION ENTRANCE
	HIGH VISIBILITY FENCE
	CLEAR AND GRUB OUTSIDE LIMIT OF GRADING
	ROADSIDE CLEANUP
	DEMOLISH
	DITCH FLOW LINE
	STORM DRAIN
	SILT FENCE
	CONTOUR
	REMOVE SIGN
	OUTFALL PROTECTION
	CB - TYPE 1
	CB - TYPE 2
	INLET PROTECTION



### PUBLIC WORKS ENGINEERING DEPARTMENT

### PROJECT INFORMATION

SOUND TO OLYMPIC TRAIL  
 SR 305 CORRIDOR  
 ENHANCEMENTS  
 PHASE 2 & PHASE 4

### REVISION BLOCK

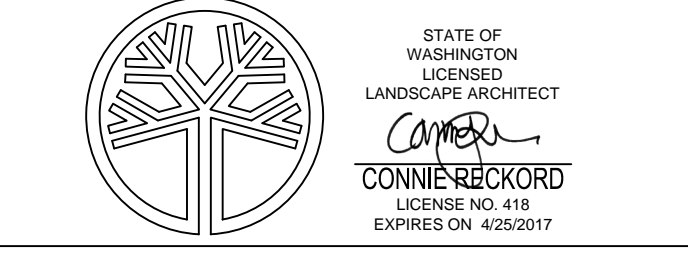
NO.	DATE	BY	REVISION

SEC. 26 , T. 25 N., R. 2E., W.M.,  
 CITY OF BAINBRIDGE ISLAND, KITSAP COUNTY, WA.

Scale:	
Horiz:	
Vert:	
Coordinate System:	
Vertical Datum:	
Designed By:	C RECKORD
Drawn By:	M STEWART
Inspected By:	
W.O. No.:	
Issue Date:	

### ABBREVIATIONS, NOTES, & LEGENDS

**MacLeod Reckord PLLC**  
 110 Prefontaine Place South, Suite 600  
 Seattle, Washington 98104  
 P 206-323-7919  
 F 206-323-9242



Drawing No. **G1.1**

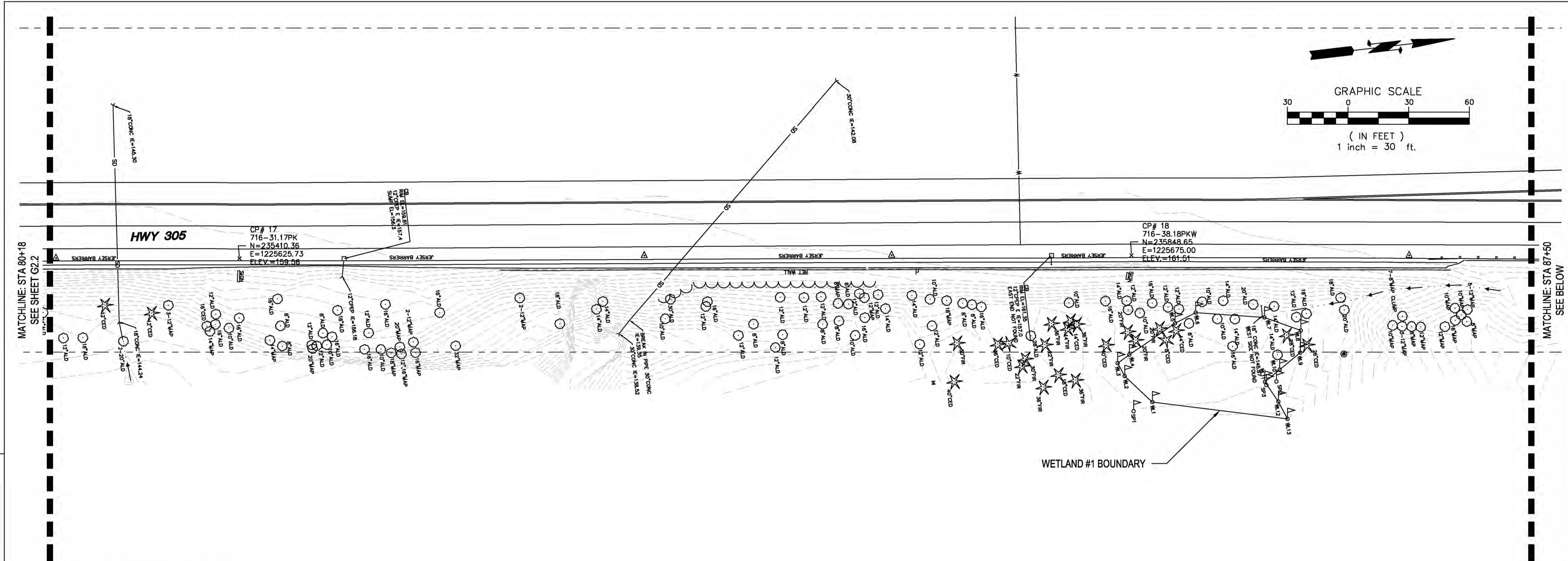




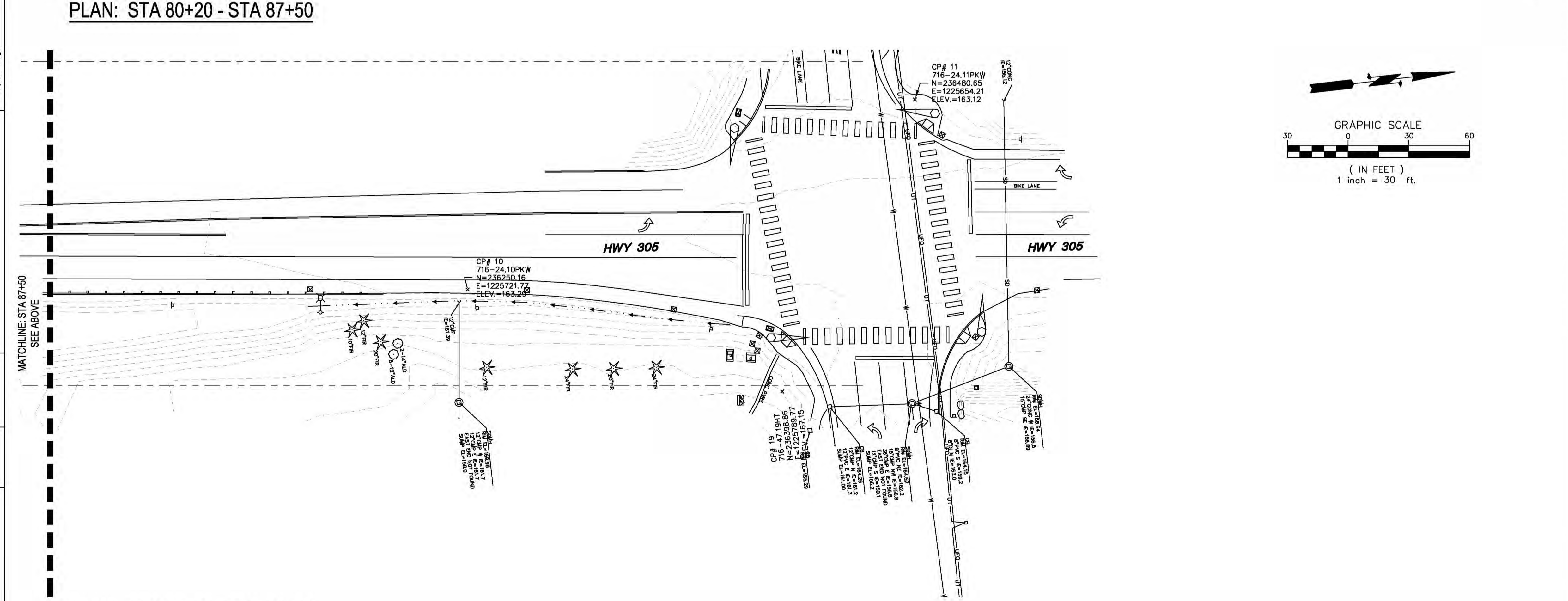
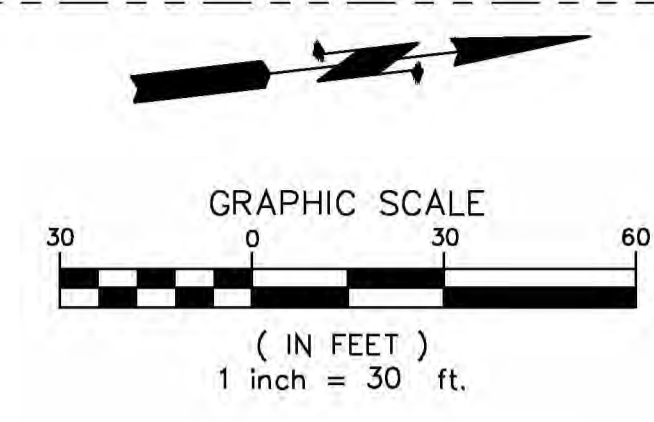


Path: Z:\Projects\Sound to Olympics Trail Bainbridge\CAD Documents\Working\STO-SURVEY.dwg  
 Plot Date: 10/19/2016 9:22 AM  
 Cad User: Arielle Farina-Williams

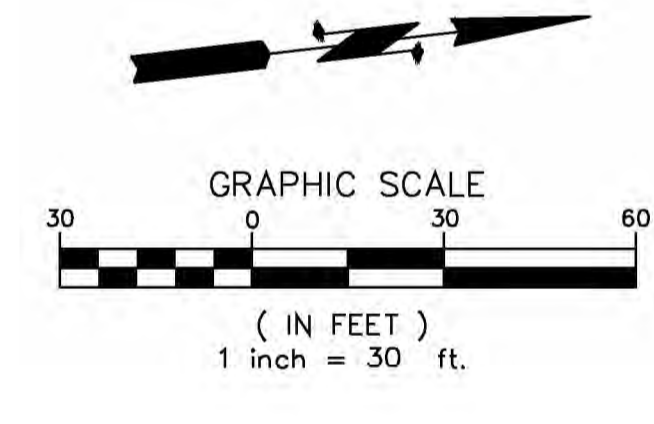
Drawn By:	Checked By:	Surveyed By:	Control Monument:	Recorded Survey:	Constructed By:
			Field Bk/Pg:	Kitsap County Auditor	
DATE:	DATE:	DATE:	AF:	Vol/Bk Page:	DATE:
REF Filenome:					



PLAN: STA 80+20 - STA 87+50



PLAN: STA 87+50 - STA 91+00



**CITY OF BAINBRIDGE ISLAND**  
 280 Madison Avenue N  
 Bainbridge Island, WA  
 206-842-2016

**PUBLIC WORKS  
 ENGINEERING  
 DEPARTMENT**

PROJECT INFORMATION

**SOUND TO OLYMPIC TRAIL  
 SR 305 CORRIDOR  
 ENHANCEMENTS  
 PHASE 2 & PHASE 4**

REVISION BLOCK


NO.	DATE	BY	REVISION

SEC.26 , T.25 N., R.2E., W.M.,  
 CITY OF BAINBRIDGE ISLAND, KITSAP COUNTY, WA.

Scale:	
Horiz:	
Vert:	
Coordinate System:	
Vertical Datum:	
Designed By:	
Drawn By:	PACE, INC
Inspected By:	
W.O. No.:	
Issue Date:	

SURVEY

**MacLeod Reckord PLLC**  
 110 Prefontaine Place South, Suite 600  
 Seattle, Washington 98104  
 P 206-323-7919  
 F 206-323-9242

Drawing No. **G2.3**



Path: Z:\Projects\Sound to Olympics Trail Bainbridge\CAD Documents\Working\STO-DEMO.dwg  
 Plot Date: 10/19/2016 8:37 AM  
 Cad User: Arielle Farina-Williams

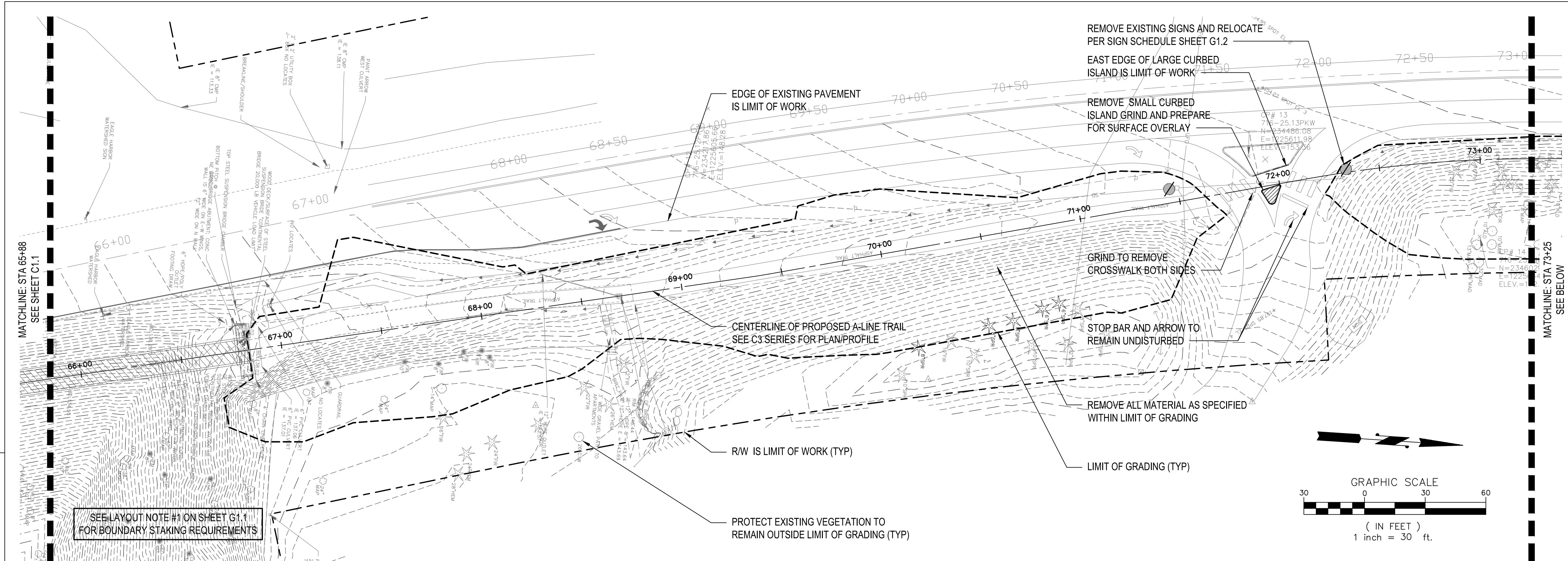
Section: \_\_\_\_\_  
 Drawn By: \_\_\_\_\_  
 Checked By: \_\_\_\_\_  
 XREF Filename: \_\_\_\_\_

Surveyed By: \_\_\_\_\_  
 Date: \_\_\_\_\_

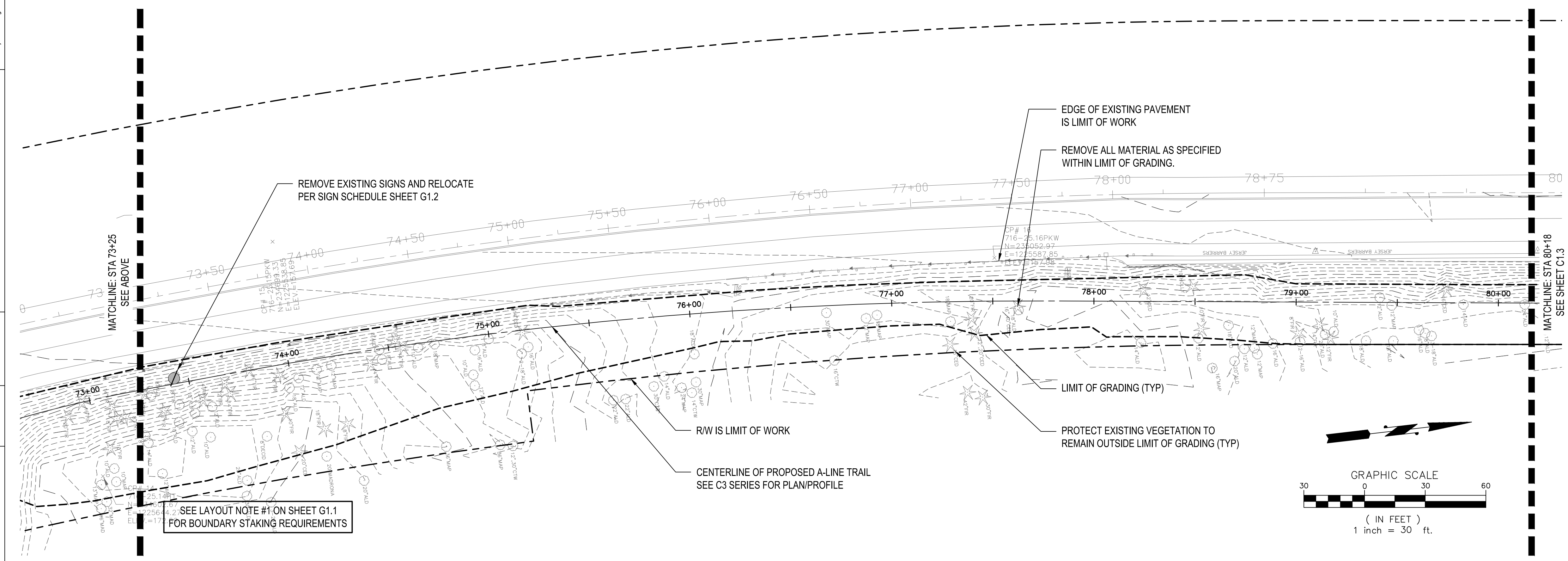
Control Monument: \_\_\_\_\_  
 Field Bk./Pg: \_\_\_\_\_

Recorded Survey: \_\_\_\_\_  
 Kitsap County Auditor  
 AF- \_\_\_\_\_  
 Vol./Bk. Page

Constructed By: \_\_\_\_\_  
 Date: \_\_\_\_\_



PLAN: STA 65+90 - STA 73+25



PLAN: STA 73+25 - STA 80+20

PROJECT INFORMATION

**SOUND TO OLYMPIC TRAIL  
 SR 305 CORRIDOR  
 ENHANCEMENTS  
 PHASE 2 & PHASE 4**

REVISION BLOCK

NO.	DATE	BY	REVISION

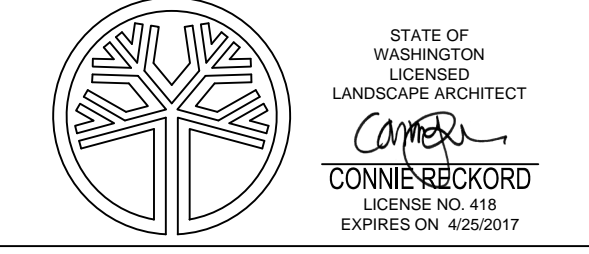
NO. DATE BY REVISION

SEC. 26, T. 25 N., R. 2 E., W. M.,  
 CITY OF BAINBRIDGE ISLAND, KITSAP COUNTY, WA.

Scale:  
 Horiz:  
 Vert:  
 Coordinate System:  
 Vertical Datum:  
 Designed By:  
 C RECKORD  
 Drawn By:  
 M STEWART  
 Inspected By:  
 W.O. No.:  
 Issue Date:

DEMOLITION PLAN

**MacLeod  
 Reckord PLLC**  
 110 Prefontaine Place South, Suite 600  
 Seattle, Washington 98104  
 P 206-323-7919  
 F 206-323-9242



Drawing No. **C1.2**

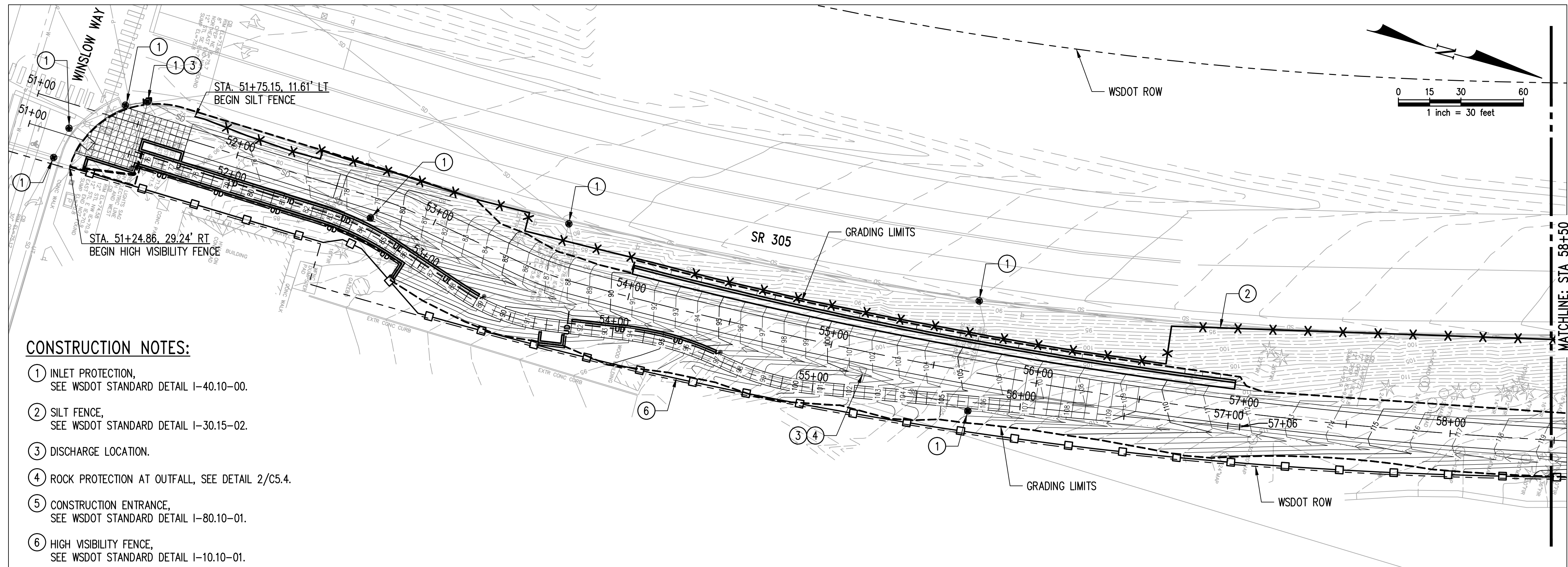






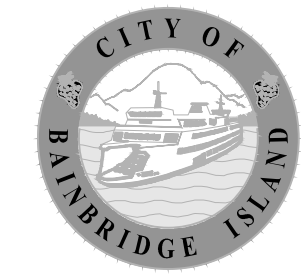
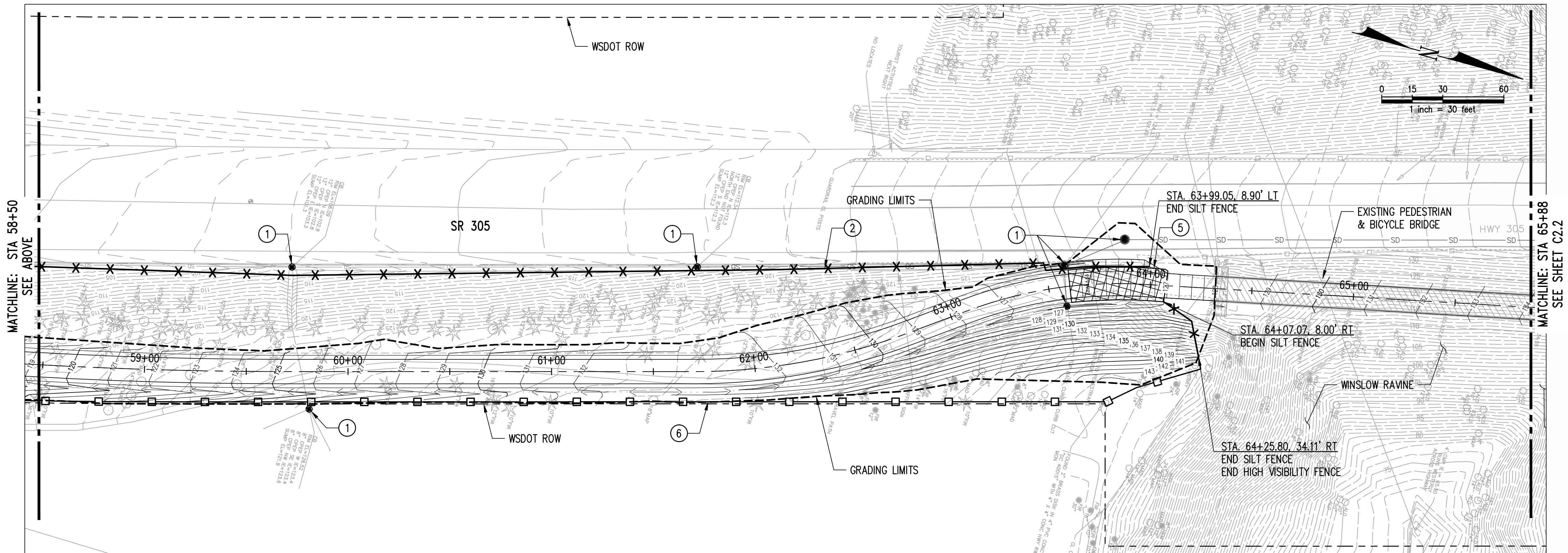
Path: Z:\114000-114400\114363 (Sound to Olympics Trail Ph II)\CADD\Design\01-TRAIL-TESC.dwg  
 Plot Date: 10/11/2016 11:24 AM  
 File Name: XREF File Name:

Drawn By: \_\_\_\_\_  
 Checked By: \_\_\_\_\_  
 Section: \_\_\_\_\_  
 Surveyed By: \_\_\_\_\_  
 Date: \_\_\_\_\_  
 Control Monument: \_\_\_\_\_  
 Field Bk/Pg: \_\_\_\_\_  
 Recorded Survey: \_\_\_\_\_  
 Kitsap County Auditor  
 AF- \_\_\_\_\_  
 Vol/Bk Page \_\_\_\_\_  
 Constructed By: \_\_\_\_\_  
 Date: \_\_\_\_\_



**CONSTRUCTION NOTES:**

- ① INLET PROTECTION, SEE WSDOT STANDARD DETAIL I-40.10-00.
- ② SILT FENCE, SEE WSDOT STANDARD DETAIL I-30.15-02.
- ③ DISCHARGE LOCATION.
- ④ ROCK PROTECTION AT OUTFALL, SEE DETAIL 2/C5.4.
- ⑤ CONSTRUCTION ENTRANCE, SEE WSDOT STANDARD DETAIL I-80.10-01.
- ⑥ HIGH VISIBILITY FENCE, SEE WSDOT STANDARD DETAIL I-10.10-01.



**CITY OF BAINBRIDGE ISLAND**  
 280 Madison Avenue N  
 Bainbridge Island, WA  
 206-842-2016

**PUBLIC WORKS  
 ENGINEERING  
 DEPARTMENT**

**PROJECT INFORMATION**

**SOUND TO OLYMPICS TRAIL/  
 SR 305 CORRIDOR  
 ENHANCEMENTS,  
 PHASE 2 & PHASE 4**

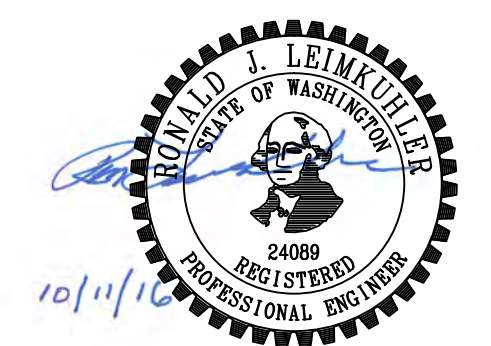
**REVISION BLOCK**

NO.	DATE	BY	REVISION

SEC.26, T.25 N., R.2E., W.M.,  
 CITY OF BAINBRIDGE ISLAND, KITSAP COUNTY, WA.

Scale: \_\_\_\_\_  
 Horiz: \_\_\_\_\_  
 Vert: \_\_\_\_\_  
 Coordinate System: \_\_\_\_\_  
 Vertical Datum: \_\_\_\_\_  
 Designed By: **Z. GRAY**  
 Drawn By: **A. MONTALVO**  
 Inspected By: **R. LEIMKUEHLER**  
 W.O. No.: \_\_\_\_\_  
 Issue Date: \_\_\_\_\_

**TESC PLAN**



**kpff** 1601 5th Avenue, Suite 1600  
 Seattle, WA 98101  
 206.622.5822  
 www.kpff.com

Drawing No. **C2.1**

Sheet No. **12** of **60**