



# CITY OF BAINBRIDGE ISLAND

## PUBLIC WORKS ENGINEERING DEPARTMENT

### NIKKEI MEMORIAL STORMWATER OUTFALL RELOCATION - CIP #779

#### SHEET INDEX

##### GENERAL

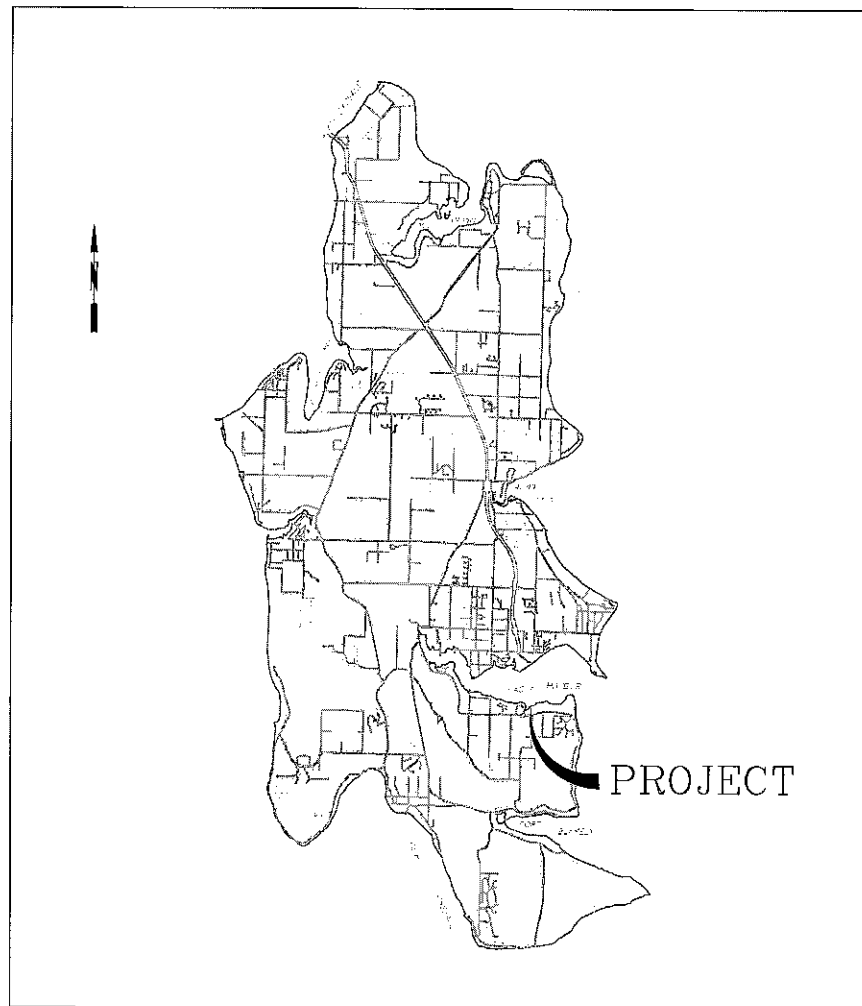
- G-001 SHEET 1 COVER, INDEX & APPROVALS
- G-002 SHEET 2 LEGEND

##### SURVEY/MAPPING

- V-001 SHEET 3 TOPO & EXISTING CONDITIONS

##### CIVIL

- C-001 SHEET 4 PIPING PLAN & PROFILE
- C-002 SHEET 5 CIVIL DETAILS
- C-003 SHEET 6 CIVIL DETAILS



VICINITY MAP

#### CITY OFFICIALS:

CITY MANAGER  
MORGAN SMITH

#### COUNCIL MEMBERS:

SARAH BLOSSOM  
KOL MEDINA  
RON PELTIER

RASHAM NASSAR  
JOE DEETS  
MATTHEW TIRMAN

#### RECOMMENDED FOR APPROVAL:



SURVEY PROGRAM MANAGER  
ROBERT T. GRANT, PLS

#### APPROVED:



DIRECTOR OF PUBLIC WORKS  
BARRY K. LOVELESS, PE



ENGINEERING MANAGER  
KENNETH CHRISTEN HAMMER, PE

Section: 35-S-25T-N-R2E  
 Drawn By: NGF  
 Date: 02-11-2019  
 Surveyed By: MCCLEARNBERRY  
 Control Monument:  
 Field By/Pg:  
 Vo/Bk Page  
 Constructed By:  
 Date: 02-11-2019  
 Knap County Auditor  
 RECORDED SURVEY  
 PHASE: EXISTING BASE MAPS, VIEW'S, WORKING FOLDER, MINOR  
 GEN-SHITS 25X34.DWG <<Cover G-001>> May 14, 2019 3:28:43 PM

PLANS LAYOUT SYMBOLS AND CALLOUTS

BASE MAP SYMBOLS

STANDARD ABBREVIATIONS

SYMBOL DESCRIPTION (ABBR.) NOTE CALLOUTS POLE NOTE STANDARD CONSTRUCTION NOTE ON PLAN SHEET STRIPING NOTE CONDUIT NOTE SIGN NOTE CABLE TRACE NO. PLAN SCALE: 1"=?' PROFILE SCALE: HORZ: 1"=?' VERT: 1"=?'

SURVEY & CONTROL MONUMENTS & POINTS SECTION DATA PLAT DATA

TOPOGRAPHIC & UTILITY

PIPING SIGNAL PAVEMENT MARKINGS STOP LINES RAISED PAVEMENT MARKERS: (RPM) SIGNS TEXT SYMBOLS

STANDARD ABBREVIATIONS A B C D E F G H I J K L M N O P Q R S T U V W X Y Z

DETAIL, SECTION & ELEVATION CALLOUTS SITE SPECIFIC DETAIL SECTION / ELEVATION SECTION/ELEVATION CALLOUT

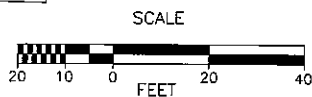
Legend Existing building Concrete flatwork Asphalt surface Unpaved driving surface Broodleaf tree Conifer Wetland with flags as delineated by others (shown with 50' buffer) Soil log Power vault Underground power & telephone line Utility pole Telephone riser Water valve Water line Catch basin

Table with columns: NO., DATE, BY, REVISION

CITY OF BAINBRIDGE ISLAND PUBLIC WORKS ENGINEERING DEPARTMENT

NIKKEI MEMORIAL STORMWATER OUTFALL RELOCATION PROJECT CIP #779 STANDARD PLANS & CIVIL BASE MAP LEGENDS AND ABBREVIATIONS G-002 2/6

Vertical text on the left edge containing project information and dates.

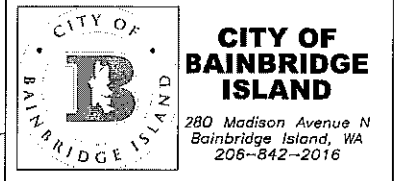


EAGLE HARBOR

CONTRACTOR TO ACCESS SITE VIA ACCESS ROAD AT WYKOFF REMEDIATION SITE. COORDINATE ACCESS WITH STAN WARNER OF CH2M HILL PROJECT DELIVERY. PHONE: (206)780-1711 (D) & (360) 731-1028 (C). CONTRACTOR RESPONSIBLE FOR COORDINATING GATE ACCESS HOURS WITH CH2M STAFF

NO WORK TO TAKE PLACE BELOW OHWM

NO ACCESS FROM WATER PERMITTED



**CITY OF BAINBRIDGE ISLAND**  
280 Madison Avenue N  
Bainbridge Island, WA  
206-842-2016

**NIKKEI MEMORIAL STORMWATER OUTFALL RELOCATION**

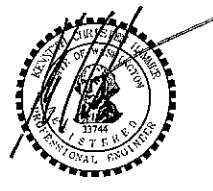
REVISION BLOCK

NO.	DATE	BY	REVISION
3-13-2019			WDFW COMMENTS

NO. DATE BY REVISION  
SEC.35, T.25N., R.2E., W.M.,  
CITY OF BAINBRIDGE ISLAND, KITSAP COUNTY, WA.

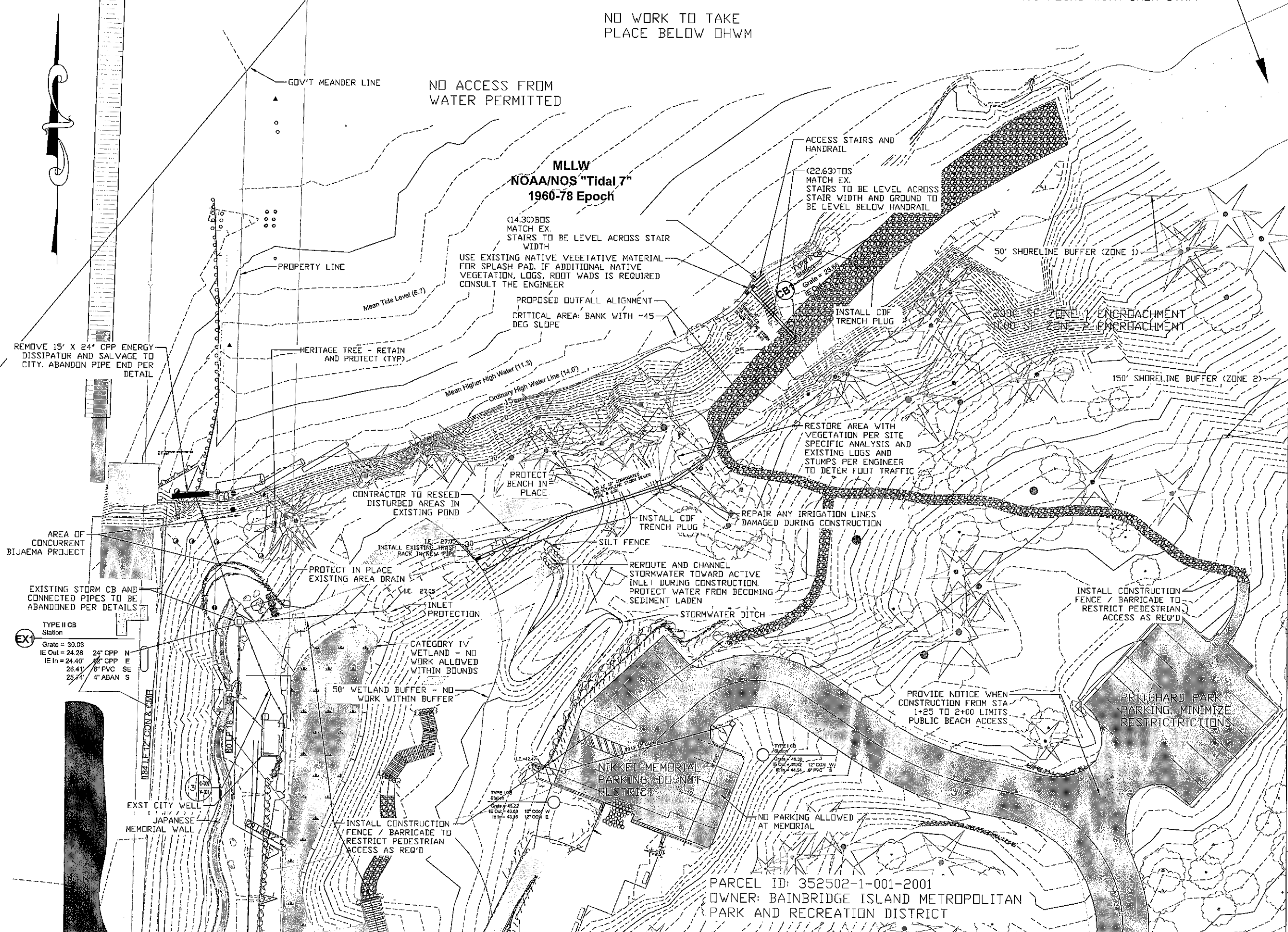
Scale: Horiz: 1"=20'  
Vert: NONE  
Coordinate System: WASHINGTON STATE PLANE, NORTH NAD83/91 (HARN)  
Vertical Datum: MLLW - NOAA/NOS "TIDAL 7" 1960-78 EPOCH  
Designed By: NBF  
Drawn By: NBF/RLG  
Inspected By:  
W.O. No.:  
Issue Date: 02-11-2019

SHEET TITLE



Drawing No. V-001

Sheet No. 3 of 6

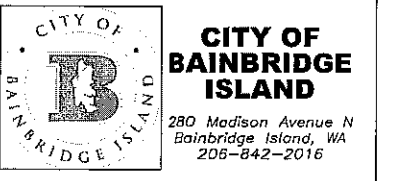
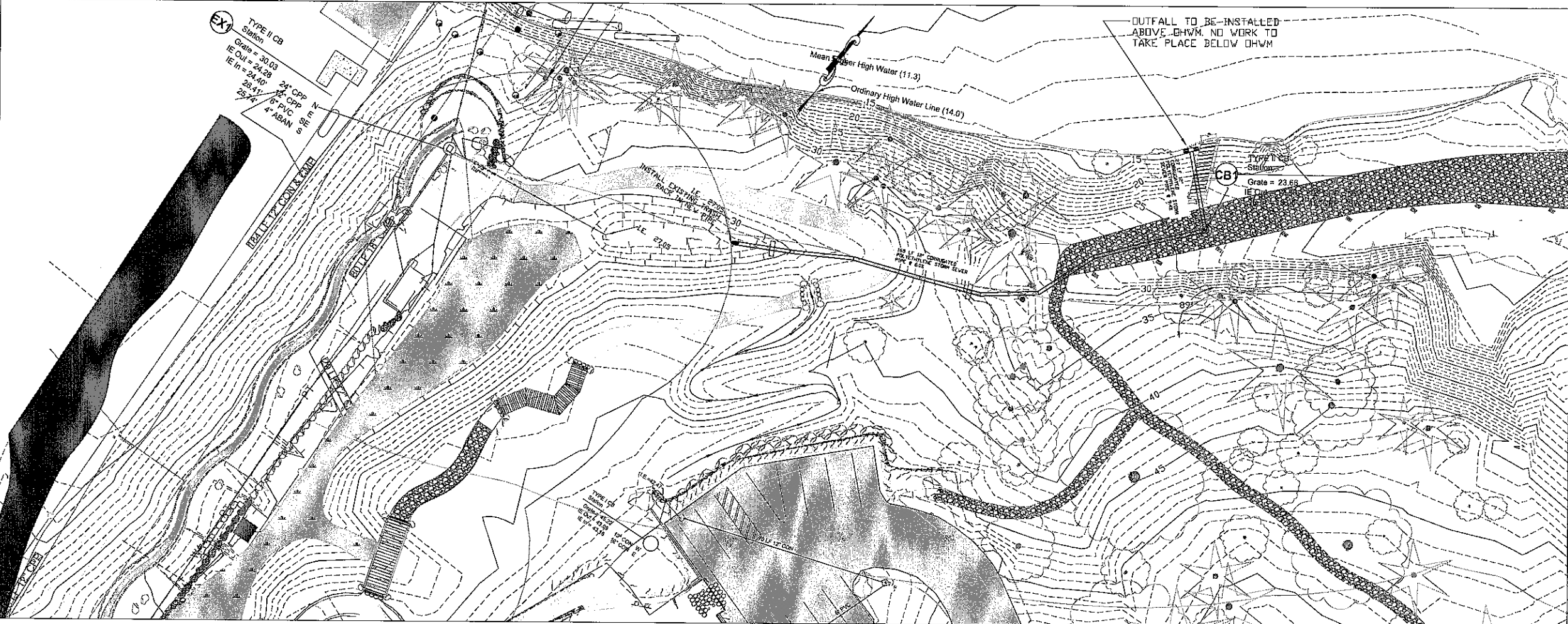


G:\DW CAPITAL PROJECTS\ACTIVE\2019 CAPITAL NIKKEI MEMORIAL OUTFALL RELOCATION\_037836.S00 DESIGN PHASE\EXISTING BASE MAPS\NICK'S WORKING FOLDER\NIKKEI\_PIPE\_NTWK\_20180405\_V6.5.DWG <<v-001 SITE PLANS>> May 14, 2019 3:51:22 PM  
 Constructed By: Krap County Auditor  
 Date:  
 Vol/Bk Page  
 Field By/Pg:  
 Date:  
 Drawn By: NBF/RTG  
 Checked By:  
 XREF Filename:  
 Section: L-N-R-E  
 Title: NIKKEI\_PIPE\_NTWK\_20180405\_V6.5

**EX1**  
TYPE II CB Station  
Grate = 30.03  
IE Out = 24.28 24" CPP N  
IE In = 24.40 18" CPP m  
26.41 6" PVC SE  
25.74 4" ABAN S

PARCEL ID: 352502-1-001-2001  
OWNER: BAINBRIDGE ISLAND METROPOLITAN PARK AND RECREATION DISTRICT

G:\PM CAPITAL PROJECTS\ACTIVE\2019 CAPITAL\NIKKEI MEMORIAL OUTFALL RELOCATION\00729\S.D. DESIGN PHASE\EXISTING BASE MAPS\WORKING\COLLECTOR\NIKKEI PIPE NETWORK\_2019\0405\_V6.5.DWG <<C-001 PLAN & PROFILES>> May 14, 2019 3:30:52 PM  
 Filename: Nikkei\_PIPE\_NETWORK\_2019\0405\_V6.5  
 XREF: Titlename:  
 Checked By:  
 Drawn By: NBF/RTG  
 Section: S-1-N-R-E  
 Surveyed By: MCCLEARN/SBERRY  
 Control Monument:  
 Date: \_\_\_\_\_  
 Field Blk/Pg: \_\_\_\_\_  
 Vol/Bk: \_\_\_\_\_ Page: \_\_\_\_\_  
 Constructed By: Kispap County Auditor  
 Date: \_\_\_\_\_



**PUBLIC WORKS  
ENGINEERING  
DEPARTMENT**

PROJECT INFORMATION

**NIKKEI MEMORIAL  
STORMWATER  
OUTFALL  
RELOCATION**

REVISION BLOCK

NO.	DATE	BY	REVISION
3-13-2019			WDFW COMMENTS

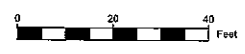
SEC.35, T.25N., R.2E., W.M.,  
CITY OF BAINBRIDGE ISLAND, KITSAP COUNTY, WA.

Scale: Horiz: 1"=20'  
 Vert: NONE  
 Coordinate System: WASHINGTON STATE PLANE, NORTH NAD83/91 (HARN)  
 Vertical Datum: MLLW - NOAA/NOS "TIDAL 7" 1960-78 EPOCH  
 Designed By: NBF  
 Drawn By: NBF/RLG  
 Inspected By: ?  
 W.O. No.: ?  
 Issue Date: 02-11-2019

SHEET TITLE

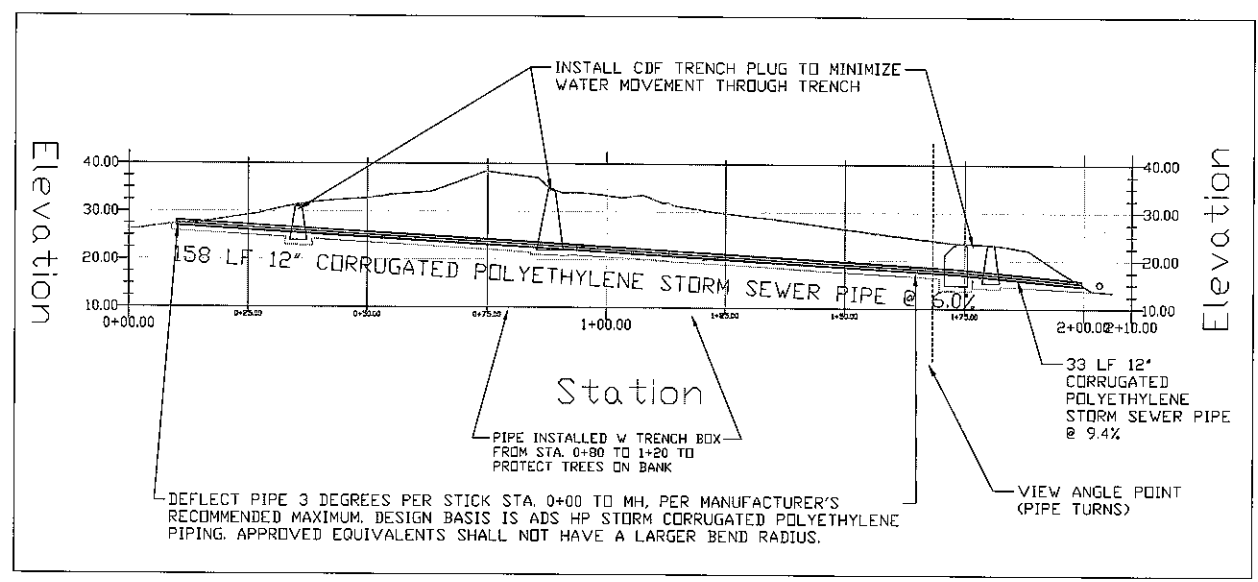
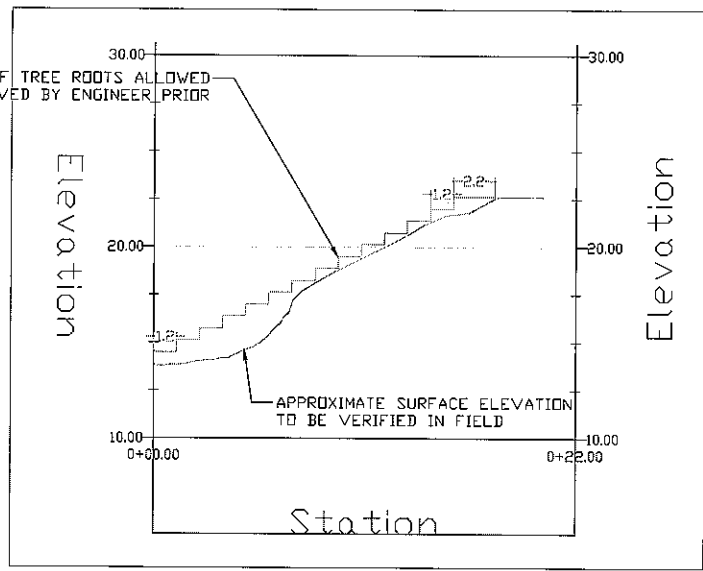


Drawing No. **C-001**



**PROFILE**

SCALE: HORZ: 1"=10'  
 VERT: 1"=10'



PROJECT INFORMATION

**NIKKEI MEMORIAL  
 STORMWATER  
 OUTFALL  
 RELOCATION**

REVISION BLOCK

NO.	DATE	BY	REVISION
3-13-2019			WDFW COMMENTS

SEC.35, T.25N., R.2E., W.M.,  
 CITY OF BAINBRIDGE ISLAND, KITSAP COUNTY, WA.

Scale:  
 Horiz: 1" = 10'  
 Vert: NONE  
 Coordinate System:  
 WASHINGTON STATE PLANE, NORTH NAD83/91 (HARN)  
 Vertical Datum:  
 MLLW - NOAA/NOS "TIDAL 7" 1960-78 EPOCH  
 Designed By:  
 NBF  
 Drawn By:  
 NBF/RLG  
 Inspected By:  
 ?  
 W.O. No.:  
 ?  
 Issue Date:  
 02-11-2019

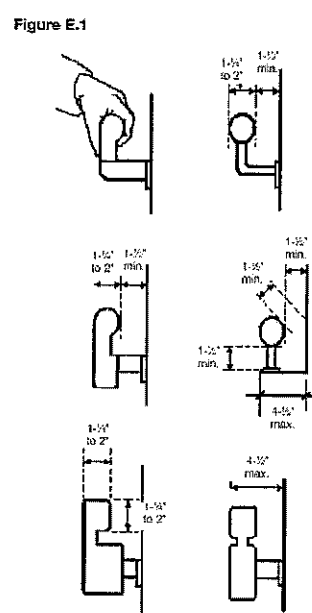
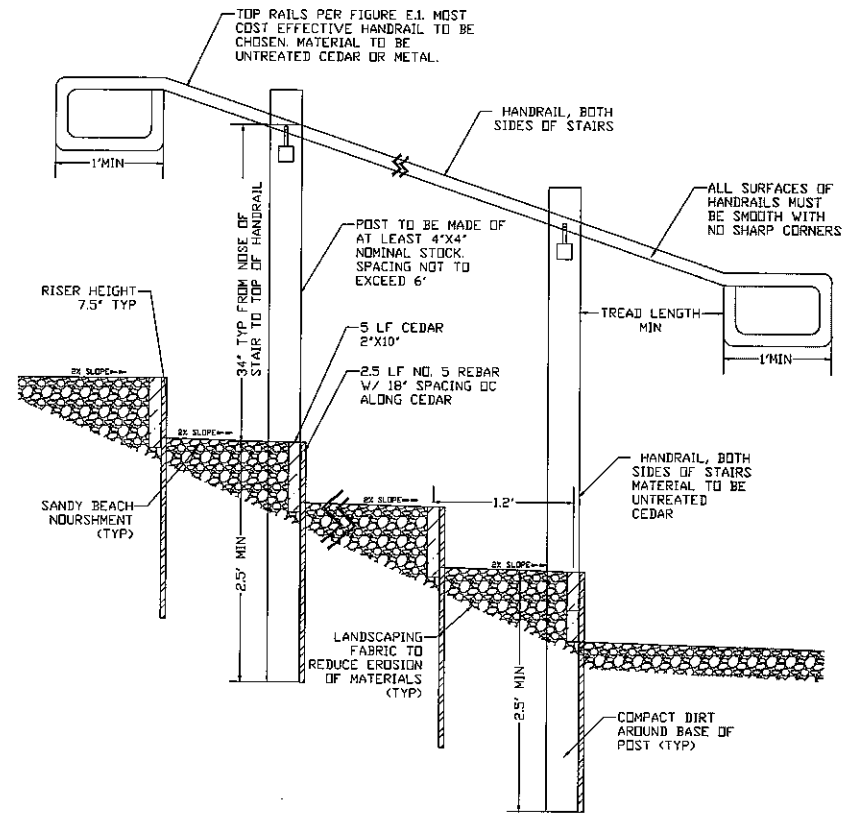
SHEET TITLE



Drawing No.  
**C-002**

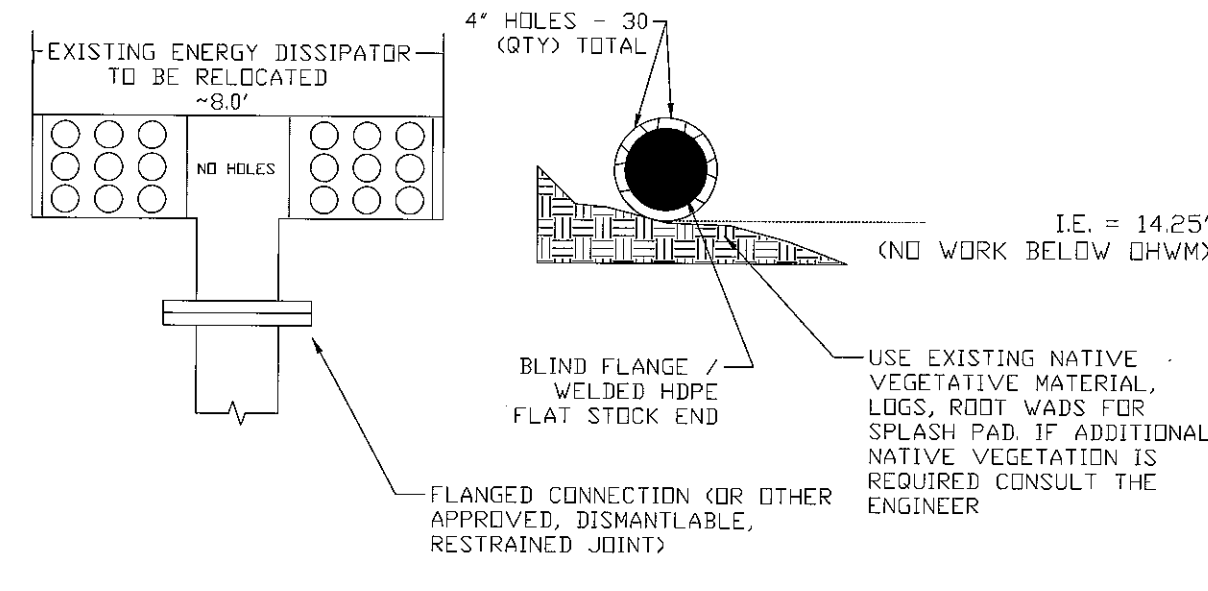
Sheet No. 5 of 6

G:\PW CAPITAL PROJECTS\ACTIVE\2019 CAPITAL\NIKKEI MEMORIAL OUTFALL RELOCATION\00729\3.0 DESIGN PHASE\EXISTING BASE MAPS\NIKKEI'S WORKING FOLDER\NIKKEI\_PIPE\_NTWK\_20180405\_V6.5.DWG <<C-002 CIVIL DETAILS>> May 14, 2019 3:30:54 PM  
 Filename: Nikkei\_PIPE\_NTWK\_20180405 v6.5  
 XREF Filename:  
 Drawn By: NBF/RTO  
 Checked By:  
 Surveyed By: MCCLEARNBERRY  
 Control Monument: T-N-R-E  
 Field BM/Pg:  
 Vol/Dk Page  
 AF  
 K (Kitsap County Auditor)  
 Constructed By:  
 Date:

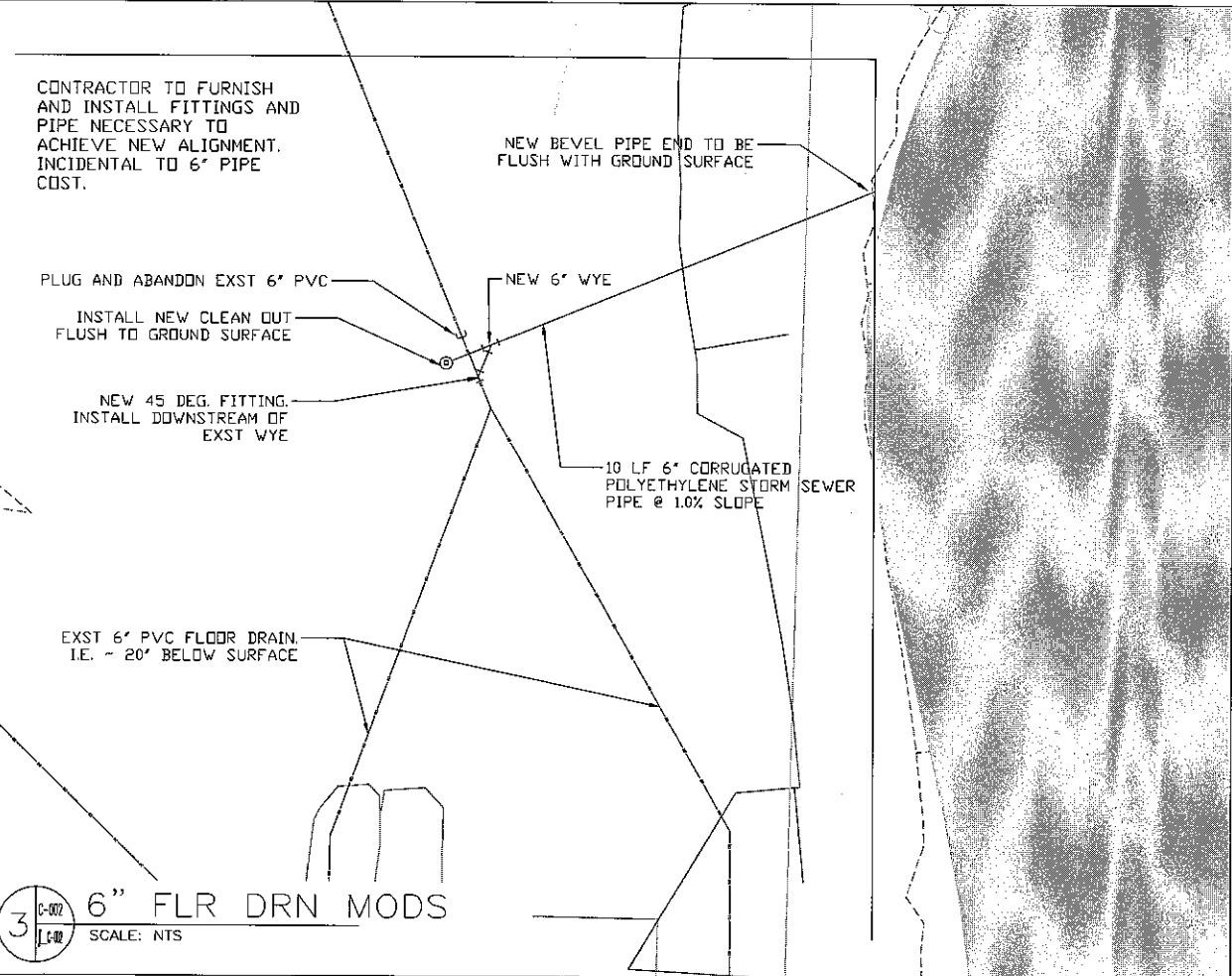


CONTRACTOR TO INSTALL STAIRS TO AVOID TREE ROOT DISRUPTION

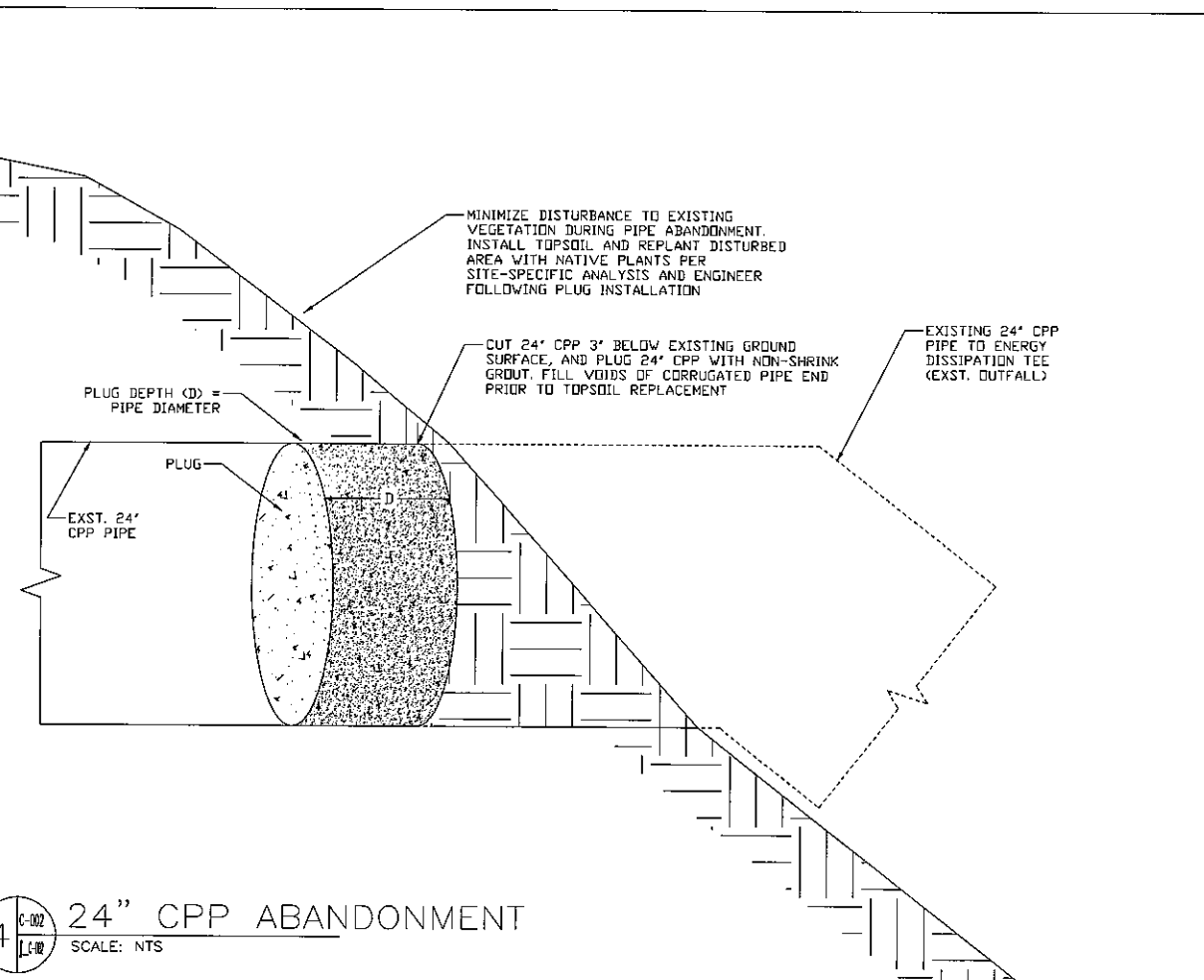
**1 C-002 STAIRS AND HANDRAIL**  
 SCALE: NTS



**2 C-002 ENERGY DISSIPATOR**  
 SCALE: NTS



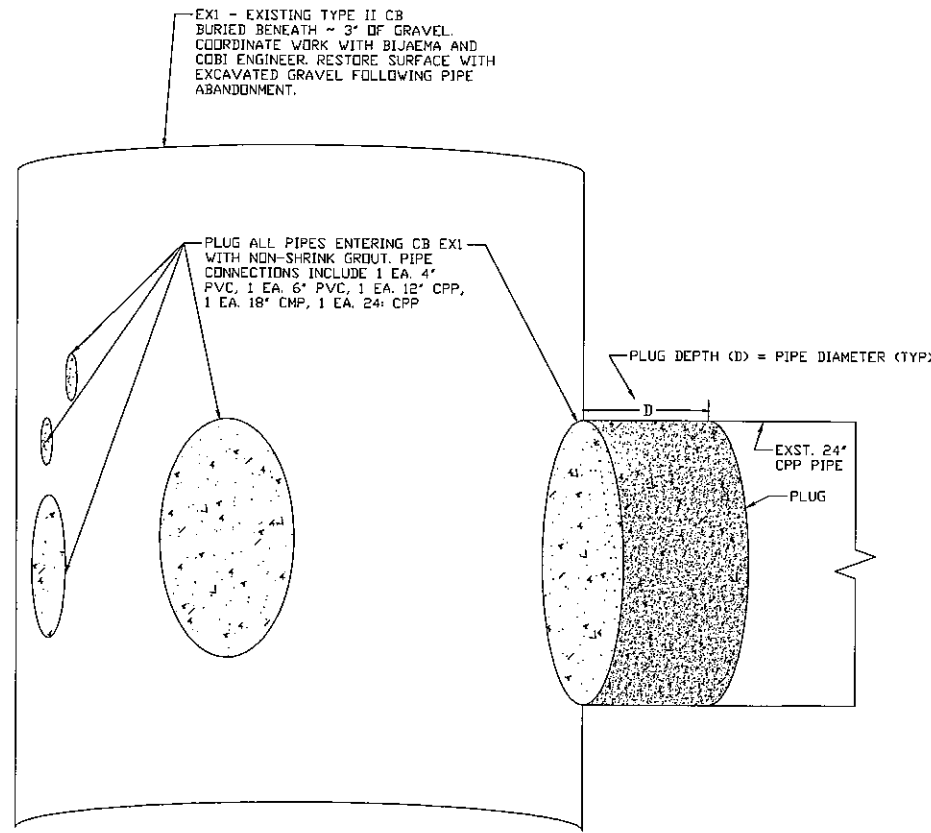
**3 C-002 6\"/>
 SCALE: NTS**



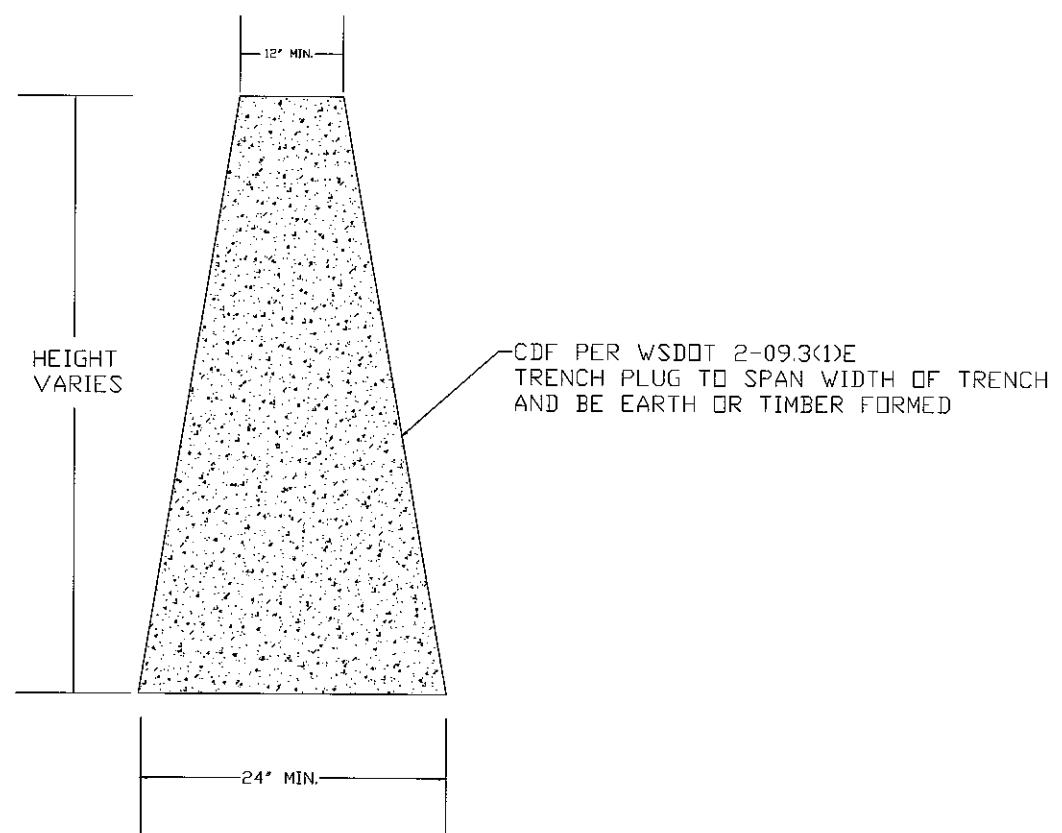
**4 C-002 24\"/>
 SCALE: NTS**

G:\PW CAPITAL PROJECTS\ACTIVE\2019 CAPITAL NIKKEI MEMORIAL OUTFALL RELOCATION\_00779\5.0 DESIGN PHASE\EXISTING BASE MAPS\NICKI'S WORKING FOLDER\NIKKEI PIPE\_NTWK\_20180405\_V6.5.DWG <<C-003 CIVIL DETAILS (2)>> May 14, 2019 3:30:56 PM  
 Filename: NIKKEI\_PIPE\_NTWK\_20180405 v6.5  
 XREF Filename:

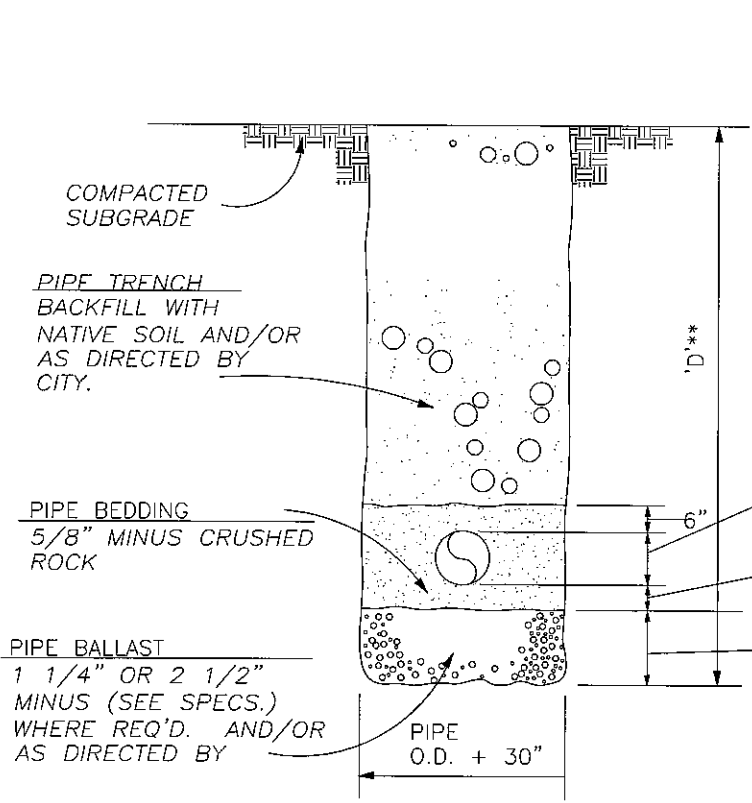
Surveyed By: MCGLEARNISBERRY  
 Checked By: \_\_\_\_\_  
 Drawn By: NBF/RTC  
 Section: S-T-N-P-E  
 Control Monument: \_\_\_\_\_  
 Field Bv/Pg: \_\_\_\_\_  
 Date: \_\_\_\_\_  
 Vol/Bk: \_\_\_\_\_ Page: \_\_\_\_\_  
 Constructed By: Kitzap County Auditor  
 Date: \_\_\_\_\_



**1** C-003  
**1.50**  
**CB EX1 ANBANDONMENT**  
 SCALE: NTS



**2** C-003  
**1.50**  
**TRENCH PLUG**  
 SCALE: NTS



- NOTES:**
1. ALL BACKFILL SHALL BE COMPACTED TO 90% MAXIMUM DENSITY. (MODIFIED PROCTOR)
  2. FOR PIPE COVER LESS THAN 36", PIPE TRENCH BACKFILL SHALL BE 5/8" MINUS CRUSHED ROCK.
- 'D' SHORING & CRIBBING ARE REQUIRED WHERE TOTAL TRENCH DEPTH MEASURED FROM TOP OF SUBGRADE TO BOTTOM OF TRENCH EXCEEDS 48".

**3** C-003  
**1.50**  
**TRENCH DETAIL**  
 SCALE: NTS



**PUBLIC WORKS  
ENGINEERING  
DEPARTMENT**

**PROJECT INFORMATION**

**NIKKEI MEMORIAL  
STORMWATER  
OUTFALL  
RELOCATION**

**REVISION BLOCK**

NO.	DATE	BY	REVISION
3-13-2019			WBFW COMMENTS

SEC.35, T.25N., R.2E., W.M.,  
 CITY OF BAINBRIDGE ISLAND, KITSAP COUNTY, WA.

Scale: Horiz: 1"=\_\_\_'  
 Vert: NONE  
 Coordinate System: WASHINGTON STATE PLANE, NORTH NAD83/91 (HARN)  
 Vertical Datum: MLLW - NOAA/NOS "TIDAL 7" 1960-78 EPOCH  
 Designed By: NBF  
 Drawn By: NBF/RLC  
 Inspected By: ?  
 W.O. No.: ?  
 Issue Date: 02-11-2019

**SHEET TITLE**



Drawing No. **C-003**

Sheet No. **6** of **6**