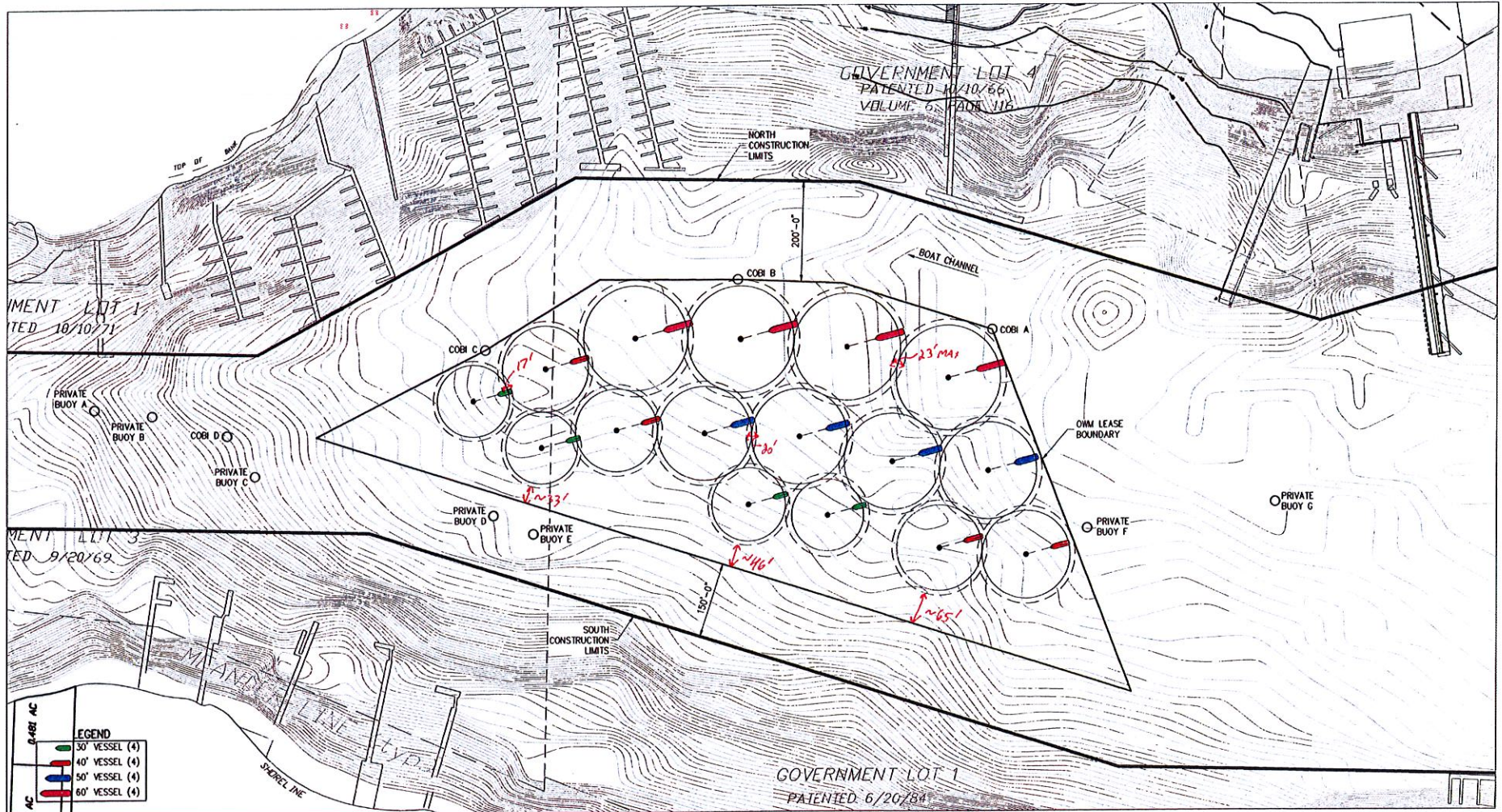
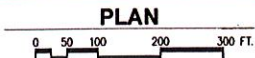


# PROPOSED BUOY LAYOUT - SWING CIRCLE



0.481 AC

LEGEND	
	30' VESSEL (4)
	40' VESSEL (4)
	50' VESSEL (4)
	60' VESSEL (4)



2018\184094 - Bainbridge Island Dave Ullin Open Water Marina Working Drawings\184094-02a.dwg

**PND ENGINEERS, INC.**  
 1736 Fourth Avenue S., Suite A  
 Seattle, Washington 98134  
 P: 206.424.1387

PND ENGINEERS, INC. IS NOT RESPONSIBLE FOR SAFETY PROGRAMS, METHODS OR PROCEDURES OF OPERATION, OR THE CONSTRUCTION OF THE DESIGN SHOWN ON THESE DRAWINGS. WHERE SPECIFICATIONS ARE GENERAL OR NOT CALLED OUT, THE SPECIFICATIONS SHALL CONFORM TO STANDARDS OF INDUSTRY. DRAWINGS ARE FOR USE ON THIS PROJECT ONLY AND ARE NOT INTENDED FOR REUSE WITHOUT WRITTEN

REVISIONS	

PROJECT: **BAINBRIDGE ISLAND  
DAVE ULLIN OPEN WATER MARIN.**  
 TITLE: **PROPOSED BUOY LAYOUT  
SWING CIRCLE**